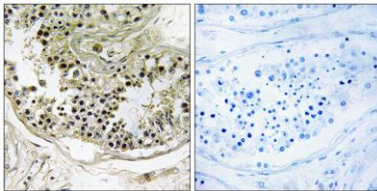


Dynein LC 2B rabbit pAb**Cat#: orb770575 (Manual)**

For research use only. Not intended for diagnostic use.

Product Name	Dynein LC 2B rabbit pAb
Host species	Rabbit
Applications	IHC;IF;ELISA
Species Cross-Reactivity	Human;Mouse
Recommended dilutions	Immunohistochemistry: 1/100 - 1/300. ELISA: 1/10000. Not yet tested in other applications.
Immunogen	The antiserum was produced against synthesized peptide derived from human DYNLRB2. AA range:21-70
Specificity	Dynein LC 2B Polyclonal Antibody detects endogenous levels of Dynein LC 2B protein.
Formulation	Liquid in PBS containing 50% glycerol, 0.5% BSA and 0.02% sodium azide..
Storage	Store at -20°C. Avoid repeated freeze-thaw cycles.
Protein Name	Dynein light chain roadblock-type 2
Gene Name	DYNLRB2
Cellular localization	Cytoplasm, cytoskeleton.
Purification	The antibody was affinity-purified from rabbit antiserum by affinity-chromatography using epitope-specific immunogen.
Clonality	Polyclonal

Concentration	1 mg/ml
Observed band	
Human Gene ID	83657
Human Swiss-Prot Number	Q8TF09
Alternative Names	DYNLRB2; DNCL2B; DNLC2B; ROBLD2; Dynein light chain roadblock-type 2; Dynein light chain 2B; cytoplasmic; Roadblock domain-containing protein 2
Background	function:May be involved in assembly and motor function of dynein, which plays a central role in cell division and intracellular transport..miscellaneous:Expression is significantly down-regulated in hepatocellular carcinoma (HCC) patients..similarity:Belongs to the GAMAD family..tissue specificity:High expression in heart, brain, placenta, skeletal muscle, prostate and small intestine; moderate in kidney, pancreas, spleen, testis, ovary and colon; low in lung, liver, thymus and leukocyte.,



Immunohistochemistry analysis of paraffin-embedded human testis tissue, using DYNLRB2 Antibody. The picture on the right is blocked with the synthesized peptide.