

TCF-3 rabbit pAb**Cat#: orb770557 (Manual)**

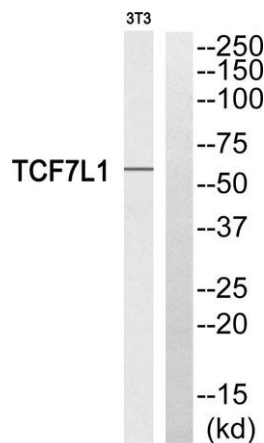
For research use only. Not intended for diagnostic use.

| | |
|---------------------------------|---|
| Product Name | TCF-3 rabbit pAb |
| Host species | Rabbit |
| Applications | WB;ELISA |
| Species Cross-Reactivity | Human;Mouse |
| Recommended dilutions | Western Blot: 1/500 - 1/2000. ELISA: 1/10000. Not yet tested in other applications. |
| Immunogen | The antiserum was produced against synthesized peptide derived from human TCF7L1. AA range:321-370 |
| Specificity | TCF-3 Polyclonal Antibody detects endogenous levels of TCF-3 protein. |
| Formulation | Liquid in PBS containing 50% glycerol, 0.5% BSA and 0.02% sodium azide.. |
| Storage | Store at -20°C. Avoid repeated freeze-thaw cycles. |
| Protein Name | Transcription factor 7-like 1 |
| Gene Name | TCF7L1 |
| Cellular localization | Nucleus. |
| Purification | The antibody was affinity-purified from rabbit antiserum by affinity-chromatography using epitope-specific immunogen. |
| Clonality | Polyclonal |

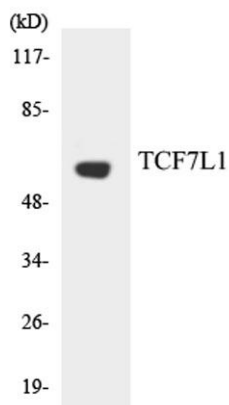
| | |
|--------------------------------|--|
| Concentration | 1 mg/ml |
| Observed band | 63kD |
| Human Gene ID | 83439 |
| Human Swiss-Prot Number | Q9HCS4 |
| Alternative Names | TCF7L1; TCF3; Transcription factor 7-like 1; HMG box transcription factor 3; TCF-3 |

Background

This gene encodes a member of the T cell factor/lymphoid enhancer factor family of transcription factors. These transcription factors are activated by beta catenin, mediate the Wnt signaling pathway and are antagonized by the transforming growth factor beta signaling pathway. The encoded protein contains a high mobility group-box DNA binding domain and participates in the regulation of cell cycle genes and cellular senescence. [provided by RefSeq, Nov 2010],



Western blot analysis of TCF7L1 Antibody. The lane on the right is blocked with the TCF7L1 peptide.



Western blot analysis of the lysates from HUVEC cells using TCF7L1 antibody.



Explore. Bioreagents.

www.biorbyt.com