

Histone H2A (phospho Thr121) rabbit pAb**Cat#: orb770548 (Manual)**

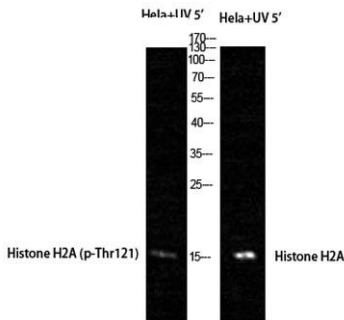
For research use only. Not intended for diagnostic use.

| | |
|---------------------------------|--|
| Product Name | Histone H2A (phospho Thr121) rabbit pAb |
| Host species | Rabbit |
| Applications | WB;IHC;IF;ELISA |
| Species Cross-Reactivity | Human;Mouse;Rat |
| Recommended dilutions | WB 1:500-2000 ,Immunohistochemistry: 1/100 - 1/300. ELISA: 1/5000. Not yet tested in other applications. |
| Immunogen | The antiserum was produced against synthesized peptide derived from human Histone H2A around the phosphorylation site of Thr121. AA range:81-130 |
| Specificity | Phospho-Histone H2A (T121) Polyclonal Antibody detects endogenous levels of Histone H2A protein only when phosphorylated at T121. |
| Formulation | Liquid in PBS containing 50% glycerol, 0.5% BSA and 0.02% sodium azide.. |
| Storage | Store at -20°C. Avoid repeated freeze-thaw cycles. |
| Protein Name | Histone H2A type 1-B/E |
| Gene Name | HIST1H2AB |
| Cellular localization | Nucleus. Chromosome. |
| Purification | The antibody was affinity-purified from rabbit antiserum by affinity-chromatography using epitope-specific immunogen. |
| Clonality | Polyclonal |

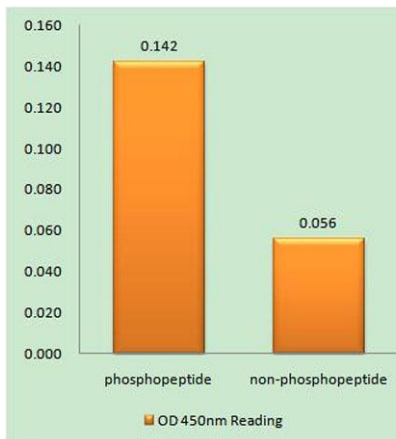
| | |
|--------------------------------|--|
| Concentration | 1 mg/ml |
| Observed band | |
| Human Gene ID | 8329/8332/8336/8969/3012/8335/3013/85235/723790/8337/92815 |
| Human Swiss-Prot Number | P0C0S8/P04908/P20671/Q96KK5/Q6FI13/Q7L7L0 |
| Alternative Names | HIST1H2AG; H2AFP; HIST1H2AI; H2AFC; HIST1H2AK; H2AFD; HIST1H2AL; H2AFI; HIST1H2AM; H2AFN; Histone H2A type 1; H2A.1; Histone H2A/p; HIST1H2AB; H2AFM; HIST1H2AE; H2AFA; Histone H2A type 1-B/E; Histone H2A.2; Histone H2A/a; Histone H2A/m; HIS |

Background

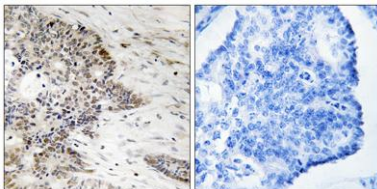
Histones are basic nuclear proteins that are responsible for the nucleosome structure of the chromosomal fiber in eukaryotes. Two molecules of each of the four core histones (H2A, H2B, H3, and H4) form an octamer, around which approximately 146 bp of DNA is wrapped in repeating units, called nucleosomes. The linker histone, H1, interacts with linker DNA between nucleosomes and functions in the compaction of chromatin into higher order structures. This gene is intronless and encodes a replication-dependent histone that is a member of the histone H2A family. Transcripts from this gene lack polyA tails but instead contain a palindromic termination element. This gene is found in the small histone gene cluster on chromosome 6p22-p21.3. [provided by RefSeq, Aug 2015],



Western Blot analysis of HeLa+UV 5' cells using Phospho-Histone H2A (T121) Polyclonal Antibody cells nucleus extracted by Minute TM Cytoplasmic and Nuclear Fractionation kit (SC-003, Inventbiotech, MN, USA).



Enzyme-Linked Immunosorbent Assay (Phospho-ELISA) for Immunogen Phosphopeptide (Phospho-left) and Non-Phosphopeptide (Phospho-right), using Histone H2A (Phospho-Thr121) Antibody



Immunohistochemistry analysis of paraffin-embedded human colon carcinoma, using Histone H2A (Phospho-Thr121) Antibody. The picture on the right is blocked with the phospho peptide.