

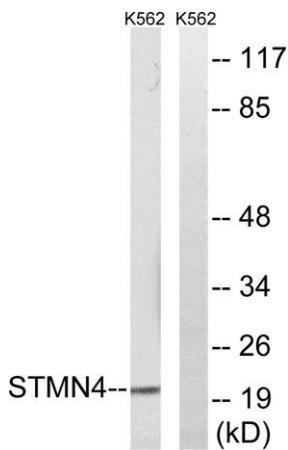
RB3 rabbit pAb**Cat#: orb770519 (Manual)**

For research use only. Not intended for diagnostic use.

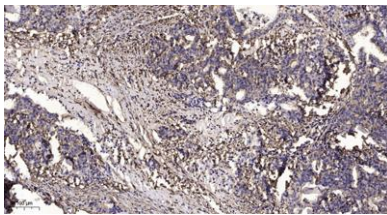
Product Name	RB3 rabbit pAb
Host species	Rabbit
Applications	WB;IHC;IF;ELISA
Species Cross-Reactivity	Human;Mouse;Rat
Recommended dilutions	Western Blot: 1/500 - 1/2000. Immunohistochemistry: 1/100 - 1/300. ELISA: 1/40000. Not yet tested in other applications.
Immunogen	The antiserum was produced against synthesized peptide derived from human STMN4. AA range:140-189
Specificity	RB3 Polyclonal Antibody detects endogenous levels of RB3 protein.
Formulation	Liquid in PBS containing 50% glycerol, 0.5% BSA and 0.02% sodium azide..
Storage	Store at -20°C. Avoid repeated freeze-thaw cycles.
Protein Name	Stathmin-4
Gene Name	STMN4
Cellular localization	Golgi apparatus . Cell projection, growth cone . Cell projection, axon .
Purification	The antibody was affinity-purified from rabbit antiserum by affinity-chromatography using epitope-specific immunogen.
Clonality	Polyclonal

Concentration	1 mg/ml
Observed band	22kD
Human Gene ID	81551
Human Swiss-Prot Number	Q9H169
Alternative Names	STMN4; Stathmin-4; Stathmin-like protein B3; RB3

Background similarity:Belongs to the stathmin family.,



Western blot analysis of lysates from K562 cells, using STMN4 Antibody. The lane on the right is blocked with the synthesized peptide.



Immunohistochemical analysis of paraffin-embedded human Gastric adenocarcinoma. 1, Antibody was diluted at 1:200(4° overnight). 2, Tris-EDTA,pH9.0 was used for antigen retrieval. 3,Secondary antibody was diluted at 1:200(room temperature, 45min).