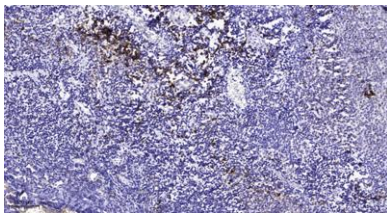


Cubilin rabbit pAb**Cat#: orb770490 (Manual)**

For research use only. Not intended for diagnostic use.

| | |
|---------------------------------|---|
| Product Name | Cubilin rabbit pAb |
| Host species | Rabbit |
| Applications | IHC;IF;WB;ELISA |
| Species Cross-Reactivity | Human;Rat;Mouse; |
| Recommended dilutions | WB 1:500-2000 Immunohistochemistry: 1/100 - 1/300. ELISA: 1/40000. Not yet tested in other applications. |
| Immunogen | Synthesized peptide derived from the N-terminal region of human Cubilin. |
| Specificity | Cubilin Polyclonal Antibody detects endogenous levels of Cubilin protein. |
| Formulation | Liquid in PBS containing 50% glycerol, 0.5% BSA and 0.02% sodium azide.. |
| Storage | Store at -20°C. Avoid repeated freeze-thaw cycles. |
| Protein Name | Cubilin |
| Gene Name | CUBN |
| Cellular localization | Apical cell membrane ; Peripheral membrane protein . Cell membrane ; Peripheral membrane protein . Membrane, coated pit . Endosome . Lysosome membrane ; Peripheral membrane protein . Lacks a transmembrane domain and depends on interaction with AMN for location at the plasma membrane (PubMed:29402915, PubMed:30523278). Colocalizes with AMN and LRP2 in the endocytotic apparatus of epithelial cells (By similarity). . |

| | |
|--------------------------------|---|
| Purification | The antibody was affinity-purified from rabbit antiserum by affinity-chromatography using epitope-specific immunogen. |
| Clonality | Polyclonal |
| Concentration | 1 mg/ml |
| Observed band | 400kD |
| Human Gene ID | 8029 |
| Human Swiss-Prot Number | O60494 |
| Alternative Names | CUBN; IFCR; Cubilin; 460 kDa receptor; Intestinal intrinsic factor receptor; Intrinsic factor-cobalamin receptor; Intrinsic factor-vitamin B12 receptor |
| Background | Cubulin (CUBN) acts as a receptor for intrinsic factor-vitamin B12 complexes. The role of receptor is supported by the presence of 27 CUB domains. Cubulin is located within the epithelium of intestine and kidney. Mutations in CUBN may play a role in autosomal recessive megaloblastic anemia. [provided by RefSeq, Jul 2008], |



Immunohistochemical analysis of paraffin-embedded human tonsil. 1, Antibody was diluted at 1:200(4° overnight). 2, Tris-EDTA,pH9.0 was used for antigen retrieval. 3,Secondary antibody was diluted at 1:200(room temperature, 45min).