

RUFY1 rabbit pAb**Cat#: orb770489 (Manual)**

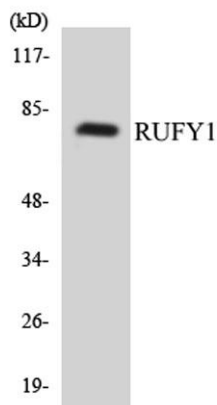
For research use only. Not intended for diagnostic use.

Product Name	RUFY1 rabbit pAb
Host species	Rabbit
Applications	WB;ELISA
Species Cross-Reactivity	Human;Mouse
Recommended dilutions	Western Blot: 1/500 - 1/2000. ELISA: 1/10000. Not yet tested in other applications.
Immunogen	The antiserum was produced against synthesized peptide derived from human RUFY1. AA range:139-188
Specificity	RUFY1 Polyclonal Antibody detects endogenous levels of RUFY1 protein.
Formulation	Liquid in PBS containing 50% glycerol, 0.5% BSA and 0.02% sodium azide..
Storage	Store at -20°C. Avoid repeated freeze-thaw cycles.
Protein Name	RUN and FYVE domain-containing protein 1
Gene Name	RUFY1
Cellular localization	Cytoplasm. Early endosome membrane; Peripheral membrane protein.
Purification	The antibody was affinity-purified from rabbit antiserum by affinity-chromatography using epitope-specific immunogen.
Clonality	Polyclonal

Concentration	1 mg/ml
Observed band	80kD
Human Gene ID	80230
Human Swiss-Prot Number	Q96T51
Alternative Names	RUFY1; RABIP4; ZFYVE12; RUN and FYVE domain-containing protein 1; FYVE-finger protein EIP1; La-binding protein 1; Rab4-interacting protein; Zinc finger FYVE domain-containing protein 12

Background

RUN and FYVE domain containing 1(RUFY1) Homo sapiens This gene encodes a protein that contains a RUN domain and a FYVE-type zinc finger domain. The encoded protein binds to phosphatidylinositol-3-phosphate (PI3P) and plays a role in early endosomal trafficking, tethering and fusion through interactions with small GTPases including Rab4, Rab5 and Rab14. Alternatively spliced transcript variants encoding multiple isoforms have been observed for this gene. [provided by RefSeq, Dec 2011],



Western blot analysis of the lysates from HUVEC cells using RUFY1 antibody.