

CASPR3 rabbit pAb**Cat#: orb770477 (Manual)**

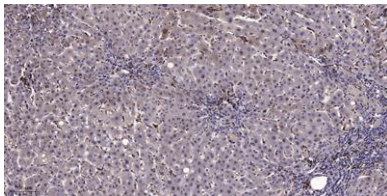
For research use only. Not intended for diagnostic use.

Product Name	CASPR3 rabbit pAb
Host species	Rabbit
Applications	IHC;IF;ELISA
Species Cross-Reactivity	Human;Rat;Mouse;
Recommended dilutions	Immunohistochemistry: 1/100 - 1/300. ELISA: 1/10000. Not yet tested in other applications.
Immunogen	Synthesized peptide derived from the C-terminal region of human CASPR3.
Specificity	CASPR3 Polyclonal Antibody detects endogenous levels of CASPR3 protein.
Formulation	Liquid in PBS containing 50% glycerol, 0.5% BSA and 0.02% sodium azide..
Storage	Store at -20°C. Avoid repeated freeze-thaw cycles.
Protein Name	Contactin-associated protein-like 3
Gene Name	CNTNAP3
Cellular localization	[Isoform 1]: Cell membrane ; Single-pass type I membrane protein . ; [Isoform 2]: Secreted .
Purification	The antibody was affinity-purified from rabbit antiserum by affinity-chromatography using epitope-specific immunogen.
Clonality	Polyclonal

Concentration	1 mg/ml
Observed band	
Human Gene ID	79937
Human Swiss-Prot Number	Q9BZ76
Alternative Names	CNTNAP3; CASPR3; KIAA1714; Contactin-associated protein-like 3; Cell recognition molecule Caspr3

Background

The protein encoded by this gene belongs to the NCP family of cell-recognition molecules. This family represents a distinct subgroup of the neuexins. NCP proteins mediate neuron-glia interactions in vertebrates and glial-glia contact in invertebrates. The protein encoded by this gene may play a role in cell recognition within the nervous system. Alternatively spliced transcript variants encoding different isoforms have been described but their biological nature has not been determined. [provided by RefSeq, Jul 2008],



Immunohistochemical analysis of paraffin-embedded human liver cancer. 1, Antibody was diluted at 1:200(4° overnight). 2, Tris-EDTA,pH9.0 was used for antigen retrieval. 3,Secondary antibody was diluted at 1:200(room temperature, 45min).