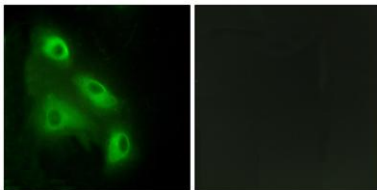


Eps8L3 rabbit pAb**Cat#: orb770455 (Manual)**

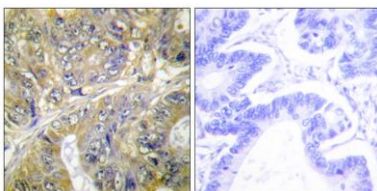
For research use only. Not intended for diagnostic use.

Product Name	Eps8L3 rabbit pAb
Host species	Rabbit
Applications	IHC;IF;ELISA
Species Cross-Reactivity	Human;Rat;Mouse;
Recommended dilutions	Immunohistochemistry: 1/100 - 1/300. Immunofluorescence: 1/200 - 1/1000. ELISA: 1/10000. Not yet tested in other applications.
Immunogen	The antiserum was produced against synthesized peptide derived from human EPS8L3. AA range:401-450
Specificity	Eps8L3 Polyclonal Antibody detects endogenous levels of Eps8L3 protein.
Formulation	Liquid in PBS containing 50% glycerol, 0.5% BSA and 0.02% sodium azide..
Storage	Store at -20°C. Avoid repeated freeze-thaw cycles.
Protein Name	Epidermal growth factor receptor kinase substrate 8-like protein 3
Gene Name	EPS8L3
Cellular localization	Cytoplasm .
Purification	The antibody was affinity-purified from rabbit antiserum by affinity-chromatography using epitope-specific immunogen.
Clonality	Polyclonal

Concentration	1 mg/ml
Observed band	67kD
Human Gene ID	79574
Human Swiss-Prot Number	Q8TE67
Alternative Names	EPS8L3; EPS8R3; Epidermal growth factor receptor kinase substrate 8-like protein 3; EPS8-like protein 3; Epidermal growth factor receptor pathway substrate 8-related protein 3; EPS8-related protein 3
Background	This gene encodes a protein that is related to epidermal growth factor receptor pathway substrate 8 (EPS8), a substrate for the epidermal growth factor receptor. The function of this protein is unknown. Alternatively spliced transcript variants encoding different isoforms exist. [provided by RefSeq, Jul 2008],



Immunofluorescence analysis of HeLa cells, using EPS8L3 Antibody. The picture on the right is blocked with the synthesized peptide.



Immunohistochemistry analysis of paraffin-embedded human colon carcinoma tissue, using EPS8L3 Antibody. The picture on the right is blocked with the synthesized peptide.