

TFEB rabbit pAb**Cat#: orb770452 (Manual)**

For research use only. Not intended for diagnostic use.

Product Name	TFEB rabbit pAb
Host species	Rabbit
Applications	WB;IHC;IF;ELISA
Species Cross-Reactivity	Human;Mouse
Recommended dilutions	Western Blot: 1/500 - 1/2000. Immunohistochemistry: 1/100 - 1/300. ELISA: 1/20000. Not yet tested in other applications.
Immunogen	The antiserum was produced against synthesized peptide derived from human TFEB. AA range:10-59
Specificity	TFEB Polyclonal Antibody detects endogenous levels of TFEB protein.
Formulation	Liquid in PBS containing 50% glycerol, 0.5% BSA and 0.02% sodium azide..
Storage	Store at -20°C. Avoid repeated freeze-thaw cycles.
Protein Name	Transcription factor EB
Gene Name	TFEB
Cellular localization	Cytoplasm, cytosol . Lysosome membrane . Nucleus . Mainly present in the cytoplasm (PubMed:23434374, PubMed:33691586). Under aberrant lysosomal storage conditions, it translocates from the cytoplasm to the nucleus (PubMed:21617040, PubMed:22576015, PubMed:23434374). The translocation to the nucleus is regulated by ATP13A2 (PubMed:23434374, PubMed:27278822). Colocalizes with mTORC1 on the lysosomal membrane: when nutrients are present, phosphorylation by MTOR prevents nuclear translocation and activity (PubMed:22343943, PubMed:22692423). Conversely, inhibition of mTORC1, starvation and lysosomal disruption, promotes dephosphorylation and translocation to the nucleus (PubMed:22343943, PubMed:22692423). Exported from the nucleus in

response to nutrient availability (PubMed:30120233). In macro

Purification

The antibody was affinity-purified from rabbit antiserum by affinity-chromatography using epitope-specific immunogen.

Clonality

Polyclonal

Concentration

1 mg/ml

Observed band

52kD

Human Gene ID

7942

Human Swiss-Prot Number

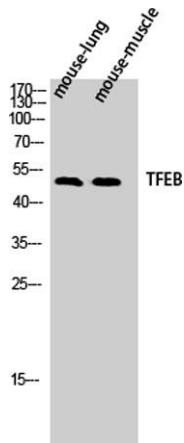
P19484

Alternative Names

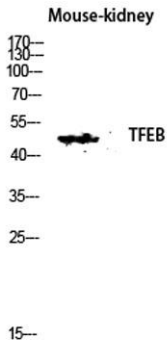
TFEB; BHLHE35; Transcription factor EB; Class E basic helix-loop-helix protein 35; bHLHe35

Background

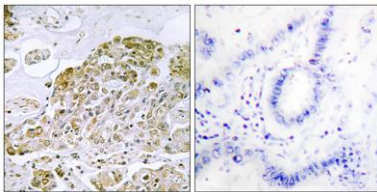
function:Probable transcription factor binds to the USF/MLTF site and probably recognizes E-box sequences in the heavy-chain immunoglobulin enhancer.,similarity:Belongs to the MiT/TFE family.,similarity:Contains 1 basic helix-loop-helix (bHLH) domain.,subunit:Efficient DNA binding requires dimerization with another bHLH protein.,



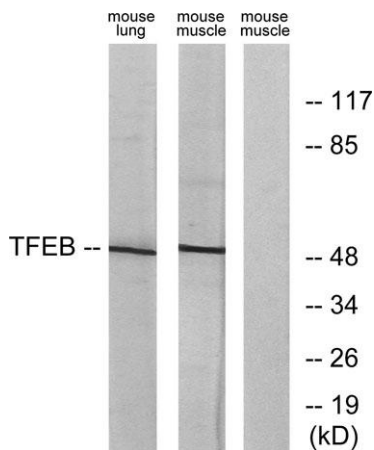
Western Blot analysis of mouse-lung mouse-muscle cells using TFEB Polyclonal Antibody diluted at 1:500



Western blot analysis of Mouse-kidney lysis using TFEB antibody. Antibody was diluted at 1:500



Immunohistochemistry analysis of paraffin-embedded human lung carcinoma tissue, using TFEB Antibody. The picture on the right is blocked with the synthesized peptide.



Western blot analysis of lysates from mouse lung and mouse muscle cells, using TFEB Antibody. The lane on the right is blocked with the synthesized peptide.