

**PBF rabbit pAb****Cat#: orb770412 (Manual)**

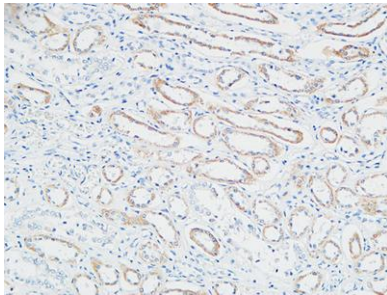
For research use only. Not intended for diagnostic use.

<b>Product Name</b>	PBF rabbit pAb
<b>Host species</b>	Rabbit
<b>Applications</b>	WB;IHC;IF;ELISA
<b>Species Cross-Reactivity</b>	Human;Mouse;Rat
<b>Recommended dilutions</b>	Western Blot: 1/500 - 1/2000. Immunohistochemistry: 1/100 - 1/300. Immunofluorescence: 1/200 - 1/1000. ELISA: 1/10000. Not yet tested in other applications.
<b>Immunogen</b>	The antiserum was produced against synthesized peptide derived from human PTTG. AA range:116-165
<b>Specificity</b>	PBF Polyclonal Antibody detects endogenous levels of PBF protein.
<b>Formulation</b>	Liquid in PBS containing 50% glycerol, 0.5% BSA and 0.02% sodium azide..
<b>Storage</b>	Store at -20°C. Avoid repeated freeze-thaw cycles.
<b>Protein Name</b>	Pituitary tumor-transforming gene 1 protein-interacting protein
<b>Gene Name</b>	PTTG1IP
<b>Cellular localization</b>	Membrane ; Single-pass type I membrane protein . Cytoplasm . Nucleus . According to PubMed:10781616, it is found in the cytoplasm and the nucleus.
<b>Purification</b>	The antibody was affinity-purified from rabbit antiserum by affinity-chromatography using epitope-specific immunogen.

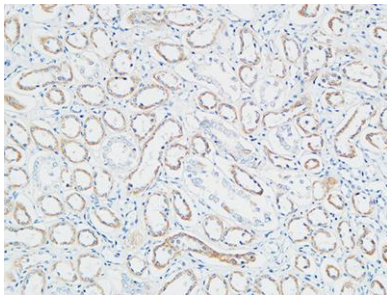
<b>Clonality</b>	Polyclonal
<b>Concentration</b>	1 mg/ml
<b>Observed band</b>	20kD
<b>Human Gene ID</b>	754
<b>Human Swiss-Prot Number</b>	P53801
<b>Alternative Names</b>	PTTG1IP; C21orf1; C21orf3; Pituitary tumor-transforming gene 1 protein-interacting protein; Pituitary tumor-transforming gene protein-binding factor; PBF; PTTG-binding factor

**Background**

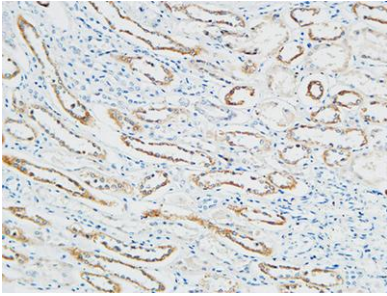
This gene encodes a single-pass type I integral membrane protein, which binds to pituitary tumor-transforming 1 protein (PTTG1), and facilitates translocation of PTTG1 into the nucleus. Coexpression of this protein and PTTG1 induces transcriptional activation of basic fibroblast growth factor. Alternatively spliced transcript variants have been found for this gene. [provided by RefSeq, Nov 2013],



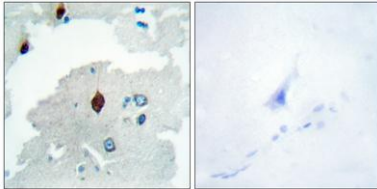
**Immunohistochemical analysis of paraffin-embedded Human Right kidney. 1, Antibody was diluted at 1:100(4° overnight). 2, High-pressure and temperature EDTA, pH8.0 was used for antigen retrieval. 3,Secondary antibody was diluted at 1:200(room temperature, 30min).**



**Immunohistochemical analysis of paraffin-embedded Human Right kidney. 1, Antibody was diluted at 1:100(4° overnight). 2, High-pressure and temperature EDTA, pH8.0 was used for antigen retrieval. 3,Secondary antibody was diluted at 1:200(room temperature, 30min).**



**Immunohistochemical analysis of paraffin-embedded Human Right kidney. 1, Antibody was diluted at 1:100(4° overnight). 2, High-pressure and temperature EDTA, pH8.0 was used for antigen retrieval. 3,Secondary antibody was diluted at 1:200(room temperature, 30min).**



**Immunohistochemistry analysis of paraffin-embedded human brain tissue, using PTTG Antibody. The picture on the right is blocked with the synthesized peptide.**