

**14-3-3  $\beta/\zeta$  rabbit pAb****Cat#: orb770402 (Manual)**

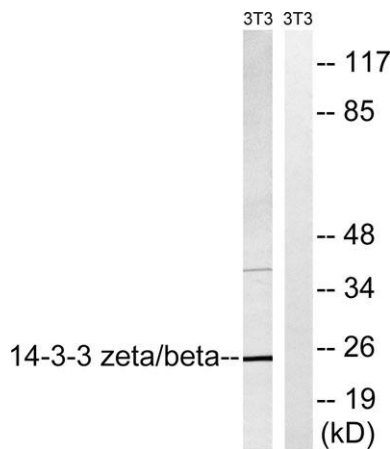
For research use only. Not intended for diagnostic use.

<b>Product Name</b>	14-3-3 $\beta/\zeta$ rabbit pAb
<b>Host species</b>	Rabbit
<b>Applications</b>	WB;IHC;IF;ELISA
<b>Species Cross-Reactivity</b>	Human;Mouse;Rat
<b>Recommended dilutions</b>	Western Blot: 1/500 - 1/2000. ELISA: 1/20000. Not yet tested in other applications.
<b>Immunogen</b>	The antiserum was produced against synthesized peptide derived from human YWHAZ. AA range:151-200
<b>Specificity</b>	14-3-3 $\beta/\zeta$ Polyclonal Antibody detects endogenous levels of 14-3-3 $\beta/\zeta$ protein.
<b>Formulation</b>	Liquid in PBS containing 50% glycerol, 0.5% BSA and 0.02% sodium azide..
<b>Storage</b>	Store at -20°C. Avoid repeated freeze-thaw cycles.
<b>Protein Name</b>	14-3-3 protein beta/alpha/14-3-3 protein zeta/delta
<b>Gene Name</b>	YWHAB/YWHAZ
<b>Cellular localization</b>	Cytoplasm . Melanosome . Located to stage I to stage IV melanosomes.
<b>Purification</b>	The antibody was affinity-purified from rabbit antiserum by affinity-chromatography using epitope-specific immunogen.
<b>Clonality</b>	Polyclonal

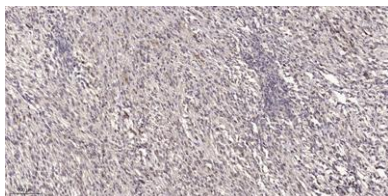
<b>Concentration</b>	1 mg/ml
<b>Observed band</b>	24kD
<b>Human Gene ID</b>	7534/7529
<b>Human Swiss-Prot Number</b>	P63104/P31946
<b>Alternative Names</b>	YWHAZ; 14-3-3 protein zeta/delta; Protein kinase C inhibitor protein 1; KCIP-1; YWHAB; 14-3-3 protein beta/alpha; Protein 1054; Protein kinase C inhibitor protein 1; KCIP-1

**Background**

This gene product belongs to the 14-3-3 family of proteins which mediate signal transduction by binding to phosphoserine-containing proteins. This highly conserved protein family is found in both plants and mammals, and this protein is 99% identical to the mouse, rat and sheep orthologs. The encoded protein interacts with IRS1 protein, suggesting a role in regulating insulin sensitivity. Several transcript variants that differ in the 5' UTR but that encode the same protein have been identified for this gene. [provided by RefSeq, Oct 2008],



**Western blot analysis of lysates from NIH/3T3 cells, using 14-3-3 beta/zeta Antibody. The lane on the right is blocked with the synthesized peptide.**



**Immunohistochemical analysis of paraffin-embedded human small intestinal carcinoma tissue. 1,primary Antibody was diluted at 1:200(4° overnight). 2, Sodium citrate pH 6.0 was used for antigen retrieval(>98°C,20min). 3,Secondary antibody was diluted at 1:2**



Explore. Bioreagents.

[www.biorbyt.com](http://www.biorbyt.com)