

14-3-3 ζ/δ rabbit pAb**Cat#: orb770400 (Manual)**

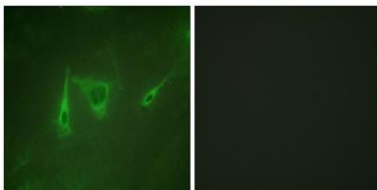
For research use only. Not intended for diagnostic use.

Product Name	14-3-3 ζ/δ rabbit pAb
Host species	Rabbit
Applications	WB;IHC;IF;ELISA
Species Cross-Reactivity	Human;Mouse;Rat
Recommended dilutions	Western Blot: 1/500 - 1/2000. Immunohistochemistry: 1/100 - 1/300. Immunofluorescence: 1/200 - 1/1000. ELISA: 1/10000. Not yet tested in other applications.
Immunogen	The antiserum was produced against synthesized peptide derived from human 14-3-3 zeta/delta. AA range:196-245
Specificity	14-3-3 ζ/δ Polyclonal Antibody detects endogenous levels of 14-3-3 ζ/δ protein.
Formulation	Liquid in PBS containing 50% glycerol, 0.5% BSA and 0.02% sodium azide..
Storage	Store at -20°C. Avoid repeated freeze-thaw cycles.
Protein Name	14-3-3 protein zeta/delta
Gene Name	YWHAZ
Cellular localization	Cytoplasm . Melanosome . Located to stage I to stage IV melanosomes.
Purification	The antibody was affinity-purified from rabbit antiserum by affinity-chromatography using epitope-specific immunogen.
Clonality	Polyclonal

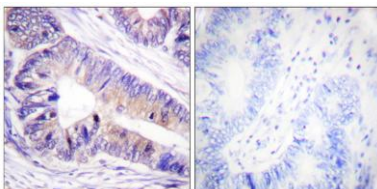
Concentration	1 mg/ml
Observed band	28kD
Human Gene ID	7534
Human Swiss-Prot Number	P63104
Alternative Names	YWHAZ; 14-3-3 protein zeta/delta; Protein kinase C inhibitor protein 1; KCIP-1

Background

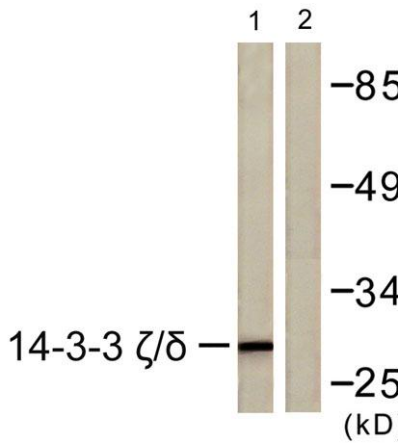
This gene product belongs to the 14-3-3 family of proteins which mediate signal transduction by binding to phosphoserine-containing proteins. This highly conserved protein family is found in both plants and mammals, and this protein is 99% identical to the mouse, rat and sheep orthologs. The encoded protein interacts with IRS1 protein, suggesting a role in regulating insulin sensitivity. Several transcript variants that differ in the 5' UTR but that encode the same protein have been identified for this gene. [provided by RefSeq, Oct 2008],



Immunofluorescence analysis of NIH/3T3 cells, using 14-3-3 zeta/delta Antibody. The picture on the right is blocked with the synthesized peptide.



Immunohistochemistry analysis of paraffin-embedded human colon carcinoma tissue, using 14-3-3 zeta/delta Antibody. The picture on the right is blocked with the synthesized peptide.



Western blot analysis of lysates from K562 cells, using 14-3-3 zeta/delta Antibody. The lane on the right is blocked with the synthesized peptide.