

**14-3-3  $\eta$  rabbit pAb****Cat#: orb770398 (Manual)**

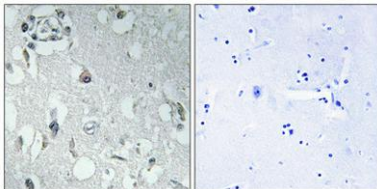
For research use only. Not intended for diagnostic use.

<b>Product Name</b>	14-3-3 $\eta$ rabbit pAb
<b>Host species</b>	Rabbit
<b>Applications</b>	WB;IHC;IF;ELISA
<b>Species Cross-Reactivity</b>	Human;Mouse;Rat
<b>Recommended dilutions</b>	Western Blot: 1/500 - 1/2000. Immunohistochemistry: 1/100 - 1/300. Immunofluorescence: 1/200 - 1/1000. ELISA: 1/5000. Not yet tested in other applications.
<b>Immunogen</b>	The antiserum was produced against synthesized peptide derived from human 14-3-3 $\eta$ . AA range:51-100
<b>Specificity</b>	14-3-3 $\eta$ Polyclonal Antibody detects endogenous levels of 14-3-3 $\eta$ protein.
<b>Formulation</b>	Liquid in PBS containing 50% glycerol, 0.5% BSA and 0.02% sodium azide..
<b>Storage</b>	Store at -20°C. Avoid repeated freeze-thaw cycles.
<b>Protein Name</b>	14-3-3 protein $\eta$
<b>Gene Name</b>	YWHAH
<b>Cellular localization</b>	cytoplasm,mitochondrion,cytosol,plasma membrane,intercalated disc,cytoplasmic vesicle membrane,extracellular exosome,
<b>Purification</b>	The antibody was affinity-purified from rabbit antiserum by affinity-chromatography using $\eta$ epitope-specific immunogen.
<b>Clonality</b>	Polyclonal

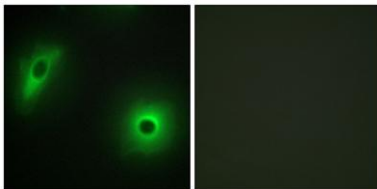
<b>Concentration</b>	1 mg/ml
<b>Observed band</b>	42kD
<b>Human Gene ID</b>	7533
<b>Human Swiss-Prot Number</b>	Q04917
<b>Alternative Names</b>	YWHAH; YWHA1; 14-3-3 protein eta; Protein AS1

**Background**

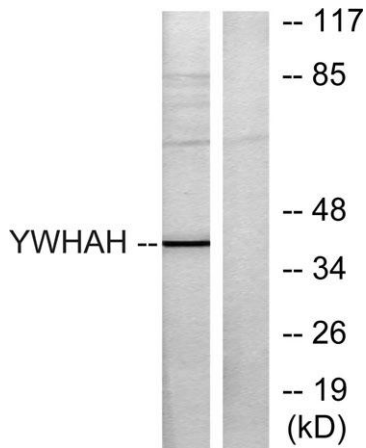
This gene product belongs to the 14-3-3 family of proteins which mediate signal transduction by binding to phosphoserine-containing proteins. This highly conserved protein family is found in both plants and mammals, and this protein is 99% identical to the mouse, rat and bovine orthologs. This gene contains a 7 bp repeat sequence in its 5' UTR, and changes in the number of this repeat have been associated with early-onset schizophrenia and psychotic bipolar disorder. [provided by RefSeq, Jun 2009],



**Immunohistochemical analysis of paraffin-embedded Human brain. Antibody was diluted at 1:100(4° overnight). High-pressure and temperature Tris-EDTA,pH8.0 was used for antigen retrieval. Negative contrl (right) obtained from antibody was pre-absorbed by i**



**Immunofluorescence analysis of HeLa cells, using 14-3-3 eta Antibody. The picture on the right is blocked with the synthesized peptide.**



**Western blot analysis of lysates from Jurkat cells, using 14-3-3 eta Antibody. The lane on the right is blocked with the synthesized peptide.**