

Wee 1 (phospho Ser53) rabbit pAb**Cat#: orb770391 (Manual)**

For research use only. Not intended for diagnostic use.

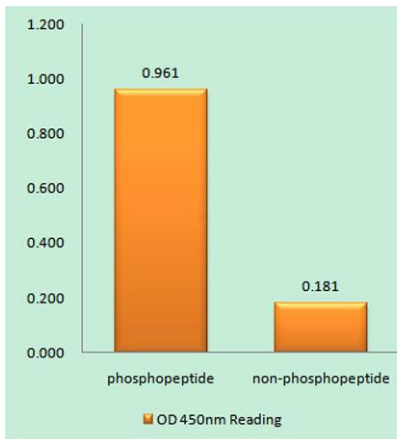
| | |
|---------------------------------|---|
| Product Name | Wee 1 (phospho Ser53) rabbit pAb |
| Host species | Rabbit |
| Applications | IHC;IF;ELISA |
| Species Cross-Reactivity | Human;Mouse;Rat |
| Recommended dilutions | Immunohistochemistry: 1/100 - 1/300. ELISA: 1/20000. Not yet tested in other applications. |
| Immunogen | The antiserum was produced against synthesized peptide derived from human WEE1 around the phosphorylation site of Ser53. AA range:19-68 |
| Specificity | Phospho-Wee 1 (S53) Polyclonal Antibody detects endogenous levels of Wee 1 protein only when phosphorylated at S53. |
| Formulation | Liquid in PBS containing 50% glycerol, 0.5% BSA and 0.02% sodium azide.. |
| Storage | Store at -20°C. Avoid repeated freeze-thaw cycles. |
| Protein Name | Wee1-like protein kinase |
| Gene Name | WEE1 |
| Cellular localization | Nucleus. |
| Purification | The antibody was affinity-purified from rabbit antiserum by affinity-chromatography using epitope-specific immunogen. |
| Clonality | Polyclonal |

Explore. Bioreagents.

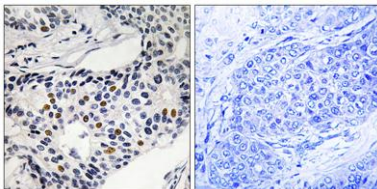
| | |
|--------------------------------|--|
| Concentration | 1 mg/ml |
| Observed band | |
| Human Gene ID | 7465 |
| Human Swiss-Prot Number | P30291 |
| Alternative Names | WEE1; Wee1-like protein kinase; WEE1hu; Wee1A kinase |

Background

WEE1 G2 checkpoint kinase(WEE1) Homo sapiens This gene encodes a nuclear protein, which is a tyrosine kinase belonging to the Ser/Thr family of protein kinases. This protein catalyzes the inhibitory tyrosine phosphorylation of CDC2/cyclin B kinase, and appears to coordinate the transition between DNA replication and mitosis by protecting the nucleus from cytoplasmically activated CDC2 kinase. [provided by RefSeq, Jul 2008],



Enzyme-Linked Immunosorbent Assay (Phospho-ELISA) for Immunogen Phosphopeptide (Phospho-left) and Non-Phosphopeptide (Phospho-right), using WEE1 (Phospho-Ser53) Antibody



Immunohistochemistry analysis of paraffin-embedded human breast carcinoma, using WEE1 (Phospho-Ser53) Antibody. The picture on the right is blocked with the phospho peptide.



Explore. Bioreagents.

www.biorbyt.com