

**Tuberin (phospho Tyr1571) rabbit pAb****Cat#: orb770325 (Manual)**

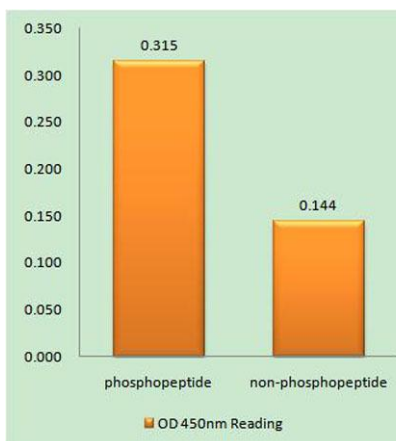
For research use only. Not intended for diagnostic use.

<b>Product Name</b>	Tuberin (phospho Tyr1571) rabbit pAb
<b>Host species</b>	Rabbit
<b>Applications</b>	WB;IHC;IF;ELISA
<b>Species Cross-Reactivity</b>	Human;Mouse;Rat
<b>Recommended dilutions</b>	Western Blot: 1/500 - 1/2000. Immunohistochemistry: 1/100 - 1/300. ELISA: 1/5000. Not yet tested in other applications.
<b>Immunogen</b>	The antiserum was produced against synthesized peptide derived from human TSC2 around the phosphorylation site of Tyr1571. AA range:1537-1586
<b>Specificity</b>	Phospho-Tuberin (Y1571) Polyclonal Antibody detects endogenous levels of Tuberin protein only when phosphorylated at Y1571.
<b>Formulation</b>	Liquid in PBS containing 50% glycerol, 0.5% BSA and 0.02% sodium azide..
<b>Storage</b>	Store at -20°C. Avoid repeated freeze-thaw cycles.
<b>Protein Name</b>	Tuberin
<b>Gene Name</b>	TSC2
<b>Cellular localization</b>	Cytoplasm. Membrane; Peripheral membrane protein. At steady state found in association with membranes.
<b>Purification</b>	The antibody was affinity-purified from rabbit antiserum by affinity-chromatography using epitope-specific immunogen.
<b>Clonality</b>	Polyclonal

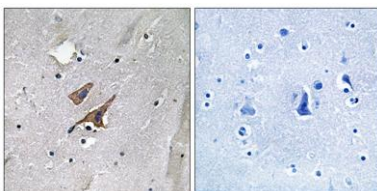
<b>Concentration</b>	1 mg/ml
<b>Observed band</b>	170kD
<b>Human Gene ID</b>	7249
<b>Human Swiss-Prot Number</b>	P49815
<b>Alternative Names</b>	TSC2; TSC4; Tuberin; Tuberous sclerosis 2 protein

## Background

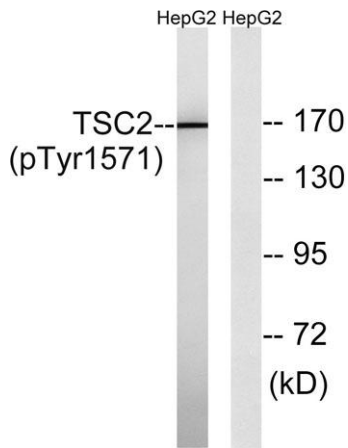
Mutations in this gene lead to tuberous sclerosis complex. Its gene product is believed to be a tumor suppressor and is able to stimulate specific GTPases. The protein associates with hamartin in a cytosolic complex, possibly acting as a chaperone for hamartin. Alternative splicing results in multiple transcript variants encoding different isoforms. [provided by RefSeq, Jul 2008],



**Enzyme-Linked Immunosorbent Assay (Phospho-ELISA) for Immunogen Phosphopeptide (Phospho-left) and Non-Phosphopeptide (Phospho-right), using TSC2 (Phospho-Tyr1571) Antibody**



**Immunohistochemistry analysis of paraffin-embedded human brain, using TSC2 (Phospho-Tyr1571) Antibody. The picture on the right is blocked with the phospho peptide.**



**Western blot analysis of TSC2 (Phospho-Tyr1571) Antibody. The lane on the right is blocked with the TSC2 (Phospho-Tyr1571) peptide.**