

TPH1 (phospho Ser260) rabbit pAb**Cat#: orb770318 (Manual)**

For research use only. Not intended for diagnostic use.

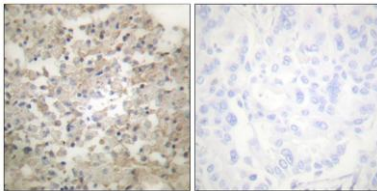
Product Name	TPH1 (phospho Ser260) rabbit pAb
Host species	Rabbit
Applications	WB;IHC;IF;ELISA
Species Cross-Reactivity	Human;Mouse;Rat
Recommended dilutions	Western Blot: 1/500 - 1/2000. Immunohistochemistry: 1/100 - 1/300. ELISA: 1/10000. Not yet tested in other applications.
Immunogen	The antiserum was produced against synthesized peptide derived from human Tryptophan Hydroxylase around the phosphorylation site of Ser260. AA range:231-280
Specificity	Phospho-TPH1 (S260) Polyclonal Antibody detects endogenous levels of TPH1 protein only when phosphorylated at S260.
Formulation	Liquid in PBS containing 50% glycerol, 0.5% BSA and 0.02% sodium azide..
Storage	Store at -20°C. Avoid repeated freeze-thaw cycles.
Protein Name	Tryptophan 5-hydroxylase 1
Gene Name	TPH1
Cellular localization	cytosol,neuron projection,
Purification	The antibody was affinity-purified from rabbit antiserum by affinity-chromatography using epitope-specific immunogen.
Clonality	Polyclonal

Explore. Bioreagents.

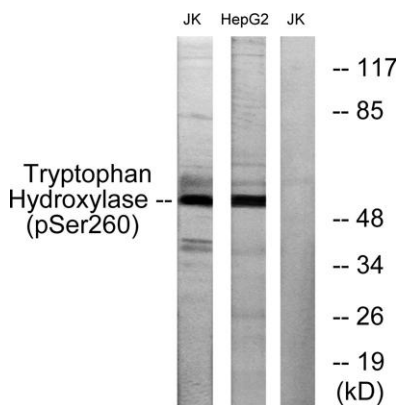
Concentration	1 mg/ml
Observed band	55kD
Human Gene ID	7166
Human Swiss-Prot Number	P17752
Alternative Names	TPH1; TPH; TPRH; TRPH; Tryptophan 5-hydroxylase 1; Tryptophan 5-monooxygenase 1

Background

This gene encodes a member of the aromatic amino acid hydroxylase family. The encoded protein catalyzes the first and rate limiting step in the biosynthesis of serotonin, an important hormone and neurotransmitter. Mutations in this gene have been associated with an elevated risk for a variety of diseases and disorders, including schizophrenia, somatic anxiety, anger-related traits, bipolar disorder, suicidal behavior, addictions, and others.[provided by RefSeq, Apr 2009],



Immunohistochemistry analysis of paraffin-embedded human lung carcinoma, using Tryptophan Hydroxylase (Phospho-Ser260) Antibody. The picture on the right is blocked with the phospho peptide.



Western blot analysis of lysates from Jurkat cells and HepG2 cells, using Tryptophan Hydroxylase (Phospho-Ser260) Antibody. The lane on the right is blocked with the phospho peptide.



Explore. Bioreagents.

www.biorbyt.com