

**Troponin I-C (phospho Ser43) rabbit pAb****Cat#: orb770281 (Manual)**

For research use only. Not intended for diagnostic use.

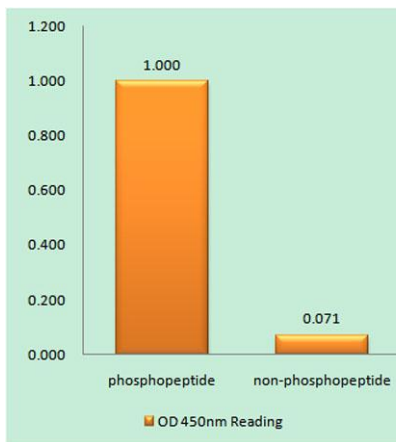
<b>Product Name</b>	Troponin I-C (phospho Ser43) rabbit pAb
<b>Host species</b>	Rabbit
<b>Applications</b>	WB;IHC;IF;ELISA
<b>Species Cross-Reactivity</b>	Human;Mouse;Rat
<b>Recommended dilutions</b>	Western Blot: 1/500 - 1/2000. Immunohistochemistry: 1/100 - 1/300. ELISA: 1/40000. Not yet tested in other applications.
<b>Immunogen</b>	The antiserum was produced against synthesized peptide derived from human TNNI3 around the phosphorylation site of Ser43. AA range:11-60
<b>Specificity</b>	Phospho-Troponin I-C (S43) Polyclonal Antibody detects endogenous levels of Troponin I-C protein only when phosphorylated at S43.
<b>Formulation</b>	Liquid in PBS containing 50% glycerol, 0.5% BSA and 0.02% sodium azide..
<b>Storage</b>	Store at -20°C. Avoid repeated freeze-thaw cycles.
<b>Protein Name</b>	Troponin I cardiac muscle
<b>Gene Name</b>	TNNI3
<b>Cellular localization</b>	cytosol,troponin complex,sarcomere,
<b>Purification</b>	The antibody was affinity-purified from rabbit antiserum by affinity-chromatography using epitope-specific immunogen.
<b>Clonality</b>	Polyclonal

Explore. Bioreagents.

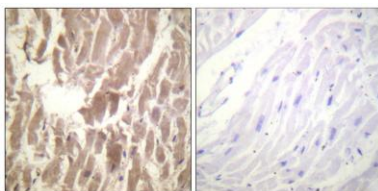
<b>Concentration</b>	1 mg/ml
<b>Observed band</b>	26kD
<b>Human Gene ID</b>	7137
<b>Human Swiss-Prot Number</b>	P19429
<b>Alternative Names</b>	TNNI3; TNNC1; Troponin I; cardiac muscle; Cardiac troponin I

### Background

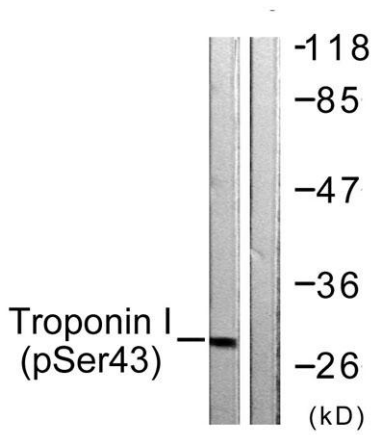
Troponin I (TnI), along with troponin T (TnT) and troponin C (TnC), is one of 3 subunits that form the troponin complex of the thin filaments of striated muscle. TnI is the inhibitory subunit; blocking actin-myosin interactions and thereby mediating striated muscle relaxation. The TnI subfamily contains three genes: TnI-skeletal-fast-twitch, TnI-skeletal-slow-twitch, and TnI-cardiac. This gene encodes the TnI-cardiac protein and is exclusively expressed in cardiac muscle tissues. Mutations in this gene cause familial hypertrophic cardiomyopathy type 7 (CMH7) and familial restrictive cardiomyopathy (RCM). [provided by RefSeq, Jul 2008],



**Enzyme-Linked Immunosorbent Assay (Phospho-ELISA) for Immunogen Phosphopeptide (Phospho-left) and Non-Phosphopeptide (Phospho-right), using TNNI3 (Phospho-Ser43) Antibody**



**Immunohistochemistry analysis of paraffin-embedded human heart, using TNNI3 (Phospho-Ser43) Antibody. The picture on the right is blocked with the phosphopeptide.**



Western blot analysis of lysates from Jurkat cells, using TNNI3 (Phospho-Ser43) Antibody. The lane on the right is blocked with the phospho peptide.