

Thymidine Kinase (phospho Ser13) rabbit pAb**Cat#: orb770271 (Manual)**

For research use only. Not intended for diagnostic use.

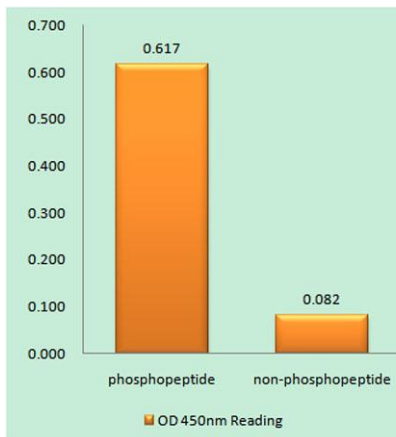
Product Name	Thymidine Kinase (phospho Ser13) rabbit pAb
Host species	Rabbit
Applications	WB;IHC;IF;ELISA
Species Cross-Reactivity	Human;Mouse;Rat;Pig(Test by out customer)
Recommended dilutions	Western Blot: 1/500 - 1/2000. Immunohistochemistry: 1/100 - 1/300. ELISA: 1/5000. Not yet tested in other applications.
Immunogen	The antiserum was produced against synthesized peptide derived from human TK around the phosphorylation site of Ser13. AA range:1-50
Specificity	Phospho-Thymidine Kinase (S13) Polyclonal Antibody detects endogenous levels of Thymidine Kinase protein only when phosphorylated at S13.
Formulation	Liquid in PBS containing 50% glycerol, 0.5% BSA and 0.02% sodium azide..
Storage	Store at -20°C. Avoid repeated freeze-thaw cycles.
Protein Name	Thymidine kinase cytosolic
Gene Name	TK1
Cellular localization	Cytoplasm.
Purification	The antibody was affinity-purified from rabbit antiserum by affinity-chromatography using epitope-specific immunogen.
Clonality	Polyclonal

Explore. Bioreagents.

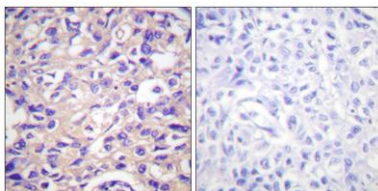
Concentration	1 mg/ml
Observed band	25kD
Human Gene ID	7083
Human Swiss-Prot Number	P04183
Alternative Names	TK1; Thymidine kinase; cytosolic

Background

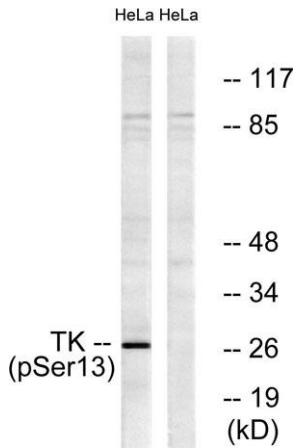
catalytic activity:ATP + thymidine = ADP + thymidine 5'-phosphate.,miscellaneous:Two forms have been identified in animal cells, one in cytosol and one in mitochondria. Activity of the cytosolic enzyme is high in proliferating cells and peaks during the S-phase of the cell cycle; it is very low in resting cells.,PTM:Phosphorylated on Ser-13 in mitosis.,similarity:Belongs to the thymidine kinase family.,



Enzyme-Linked Immunosorbent Assay (Phospho-ELISA) for Immunogen Phosphopeptide (Phospho-left) and Non-Phosphopeptide (Phospho-right), using TK (Phospho-Ser13) Antibody



Immunohistochemistry analysis of paraffin-embedded human breast carcinoma, using TK (Phospho-Ser13) Antibody. The picture on the right is blocked with the phospho peptide.



Western blot analysis of lysates from HeLa cells treated with paclitaxel 1uM 24h, using TK (Phospho-Ser13) Antibody. The lane on the right is blocked with the phospho peptide.