

PBR rabbit pAb**Cat#: orb770262 (Manual)**

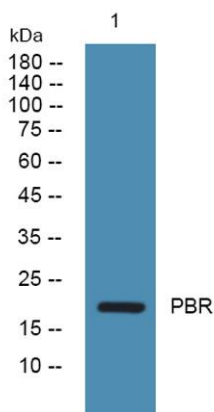
For research use only. Not intended for diagnostic use.

| | |
|---------------------------------|-----------------------------------------------------------------------------------------------------------------------|
| Product Name | PBR rabbit pAb |
| Host species | Rabbit |
| Applications | WB;IHC |
| Species Cross-Reactivity | Human;Rat;Mouse; |
| Recommended dilutions | WB 1:500-2000;IHC-p 1:50-300 |
| Immunogen | Synthesized peptide derived from PBR . at AA range: 90-170 |
| Specificity | PBR Polyclonal Antibody detects endogenous levels of PBR protein. |
| Formulation | Liquid in PBS containing 50% glycerol, 0.5% BSA and 0.02% sodium azide.. |
| Storage | Store at -20°C. Avoid repeated freeze-thaw cycles. |
| Protein Name | Translocator protein |
| Gene Name | TSPO |
| Cellular localization | Mitochondrion membrane ; Multi-pass membrane protein . |
| Purification | The antibody was affinity-purified from rabbit antiserum by affinity-chromatography using epitope-specific immunogen. |
| Clonality | Polyclonal |

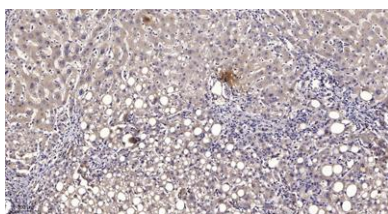
| | |
|--------------------------------|----------------------------------------------------------------------------------------------------------------------------------|
| Concentration | 1 mg/ml |
| Observed band | 20kD |
| Human Gene ID | 706 |
| Human Swiss-Prot Number | P30536 |
| Alternative Names | TSPO; BZRP; MBR; Translocator protein; Mitochondrial benzodiazepine receptor; PKBS; Peripheral-type benzodiazepine receptor; PBR |

Background

Present mainly in the mitochondrial compartment of peripheral tissues, the protein encoded by this gene interacts with some benzodiazepines and has different affinities than its endogenous counterpart. The protein is a key factor in the flow of cholesterol into mitochondria to permit the initiation of steroid hormone synthesis. Alternatively spliced transcript variants have been reported; one of the variants lacks an internal exon and is considered non-coding, and the other variants encode the same protein. [provided by RefSeq, Feb 2012],



Western blot analysis of lysates from DU145 cells, primary antibody was diluted at 1:1000, 4° over night



Immunohistochemical analysis of paraffin-embedded human liver cancer. 1, Antibody was diluted at 1:200(4° overnight). 2, Tris-EDTA,pH9.0 was used for antigen retrieval. 3,Secondary antibody was diluted at 1:200(room temperature, 45min).



Explore. Bioreagents.

www.biorbyt.com