

**TGFβ RII (phospho Ser225) rabbit pAb****Cat#: orb770254 (Manual)**

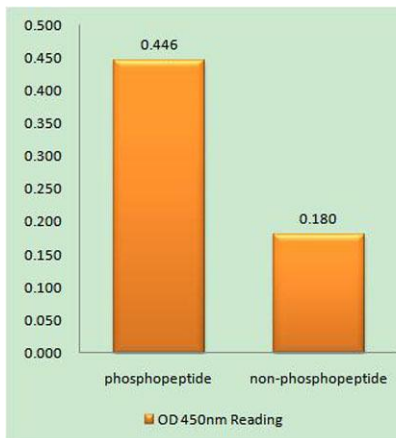
For research use only. Not intended for diagnostic use.

<b>Product Name</b>	TGFβ RII (phospho Ser225) rabbit pAb
<b>Host species</b>	Rabbit
<b>Applications</b>	IHC;IF;ELISA
<b>Species Cross-Reactivity</b>	Human;Mouse
<b>Recommended dilutions</b>	WB 1:500-2000 ,Immunohistochemistry: 1/100 - 1/300. ELISA: 1/10000. Not yet tested in other applications.
<b>Immunogen</b>	The antiserum was produced against synthesized peptide derived from human TGF beta Receptor II around the phosphorylation site of Ser225/250. AA range:191-240
<b>Specificity</b>	Phospho-TGFβ RII (S225) Polyclonal Antibody detects endogenous levels of TGFβ RII protein only when phosphorylated at S225.
<b>Formulation</b>	Liquid in PBS containing 50% glycerol, 0.5% BSA and 0.02% sodium azide..
<b>Storage</b>	Store at -20°C. Avoid repeated freeze-thaw cycles.
<b>Protein Name</b>	TGF-beta receptor type-2
<b>Gene Name</b>	TGFBR2
<b>Cellular localization</b>	Cell membrane ; Single-pass type I membrane protein . Membrane raft . ; [Isoform 3]: Secreted .
<b>Purification</b>	The antibody was affinity-purified from rabbit antiserum by affinity-chromatography using epitope-specific immunogen.
<b>Clonality</b>	Polyclonal

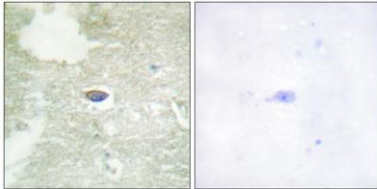
<b>Concentration</b>	1 mg/ml
<b>Observed band</b>	75kD
<b>Human Gene ID</b>	7048
<b>Human Swiss-Prot Number</b>	P37173
<b>Alternative Names</b>	TGFBR2; TGF-beta receptor type-2; TGFR-2; TGF-beta type II receptor; Transforming growth factor-beta receptor type II; TGF-beta receptor type II; TbetaR-II

## Background

This gene encodes a member of the Ser/Thr protein kinase family and the TGF $\beta$  receptor subfamily. The encoded protein is a transmembrane protein that has a protein kinase domain, forms a heterodimeric complex with another receptor protein, and binds TGF-beta. This receptor/ligand complex phosphorylates proteins, which then enter the nucleus and regulate the transcription of a subset of genes related to cell proliferation. Mutations in this gene have been associated with Marfan Syndrome, Loeys-Deitz Aortic Aneurysm Syndrome, and the development of various types of tumors. Alternatively spliced transcript variants encoding different isoforms have been characterized. [provided by RefSeq, Jul 2008],



**Enzyme-Linked Immunosorbent Assay (Phospho-ELISA) for Immunogen Phosphopeptide (Phospho-left) and Non-Phosphopeptide (Phospho-right), using TGF beta Receptor II (Phospho-Ser225/250) Antibody**



**Immunohistochemistry analysis of paraffin-embedded human brain, using TGF beta Receptor II (Phospho-Ser225/250) Antibody. The picture on the right is blocked with the phospho peptide.**