

Hic-5 rabbit pAb**Cat#: orb770252 (Manual)**

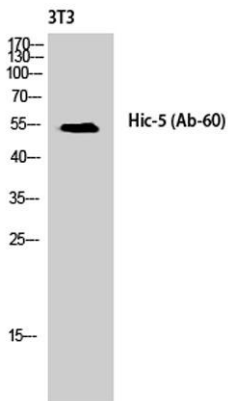
For research use only. Not intended for diagnostic use.

Product Name	Hic-5 rabbit pAb
Host species	Rabbit
Applications	WB;IHC;IF;ELISA
Species Cross-Reactivity	Human;Mouse;Rat
Recommended dilutions	Immunohistochemistry: 1/100 - 1/300. Immunofluorescence: 1/200 - 1/1000. ELISA: 1/10000. Not yet tested in other applications.
Immunogen	The antiserum was produced against synthesized peptide derived from human Hic-5. AA range:31-80
Specificity	Hic-5 Polyclonal Antibody detects endogenous levels of Hic-5 protein.
Formulation	Liquid in PBS containing 50% glycerol, 0.5% BSA and 0.02% sodium azide..
Storage	Store at -20°C. Avoid repeated freeze-thaw cycles.
Protein Name	Transforming growth factor beta-1-induced transcript 1 protein
Gene Name	TGFB1I1
Cellular localization	Cell junction, focal adhesion. Nucleus matrix. Cytoplasm, cytoskeleton. Associated with the actin cytoskeleton; colocalizes with stress fibers.
Purification	The antibody was affinity-purified from rabbit antiserum by affinity-chromatography using epitope-specific immunogen.
Clonality	Polyclonal

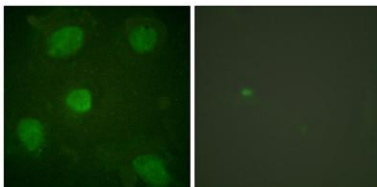
Concentration	1 mg/ml
Observed band	
Human Gene ID	7041
Human Swiss-Prot Number	O43294
Alternative Names	TGFB1I1; ARA55; Transforming growth factor beta-1-induced transcript 1 protein; Androgen receptor coactivator 55 kDa protein; Androgen receptor-associated protein of 55 kDa; Hydrogen peroxide-inducible clone 5 protein; Hic-5

Background

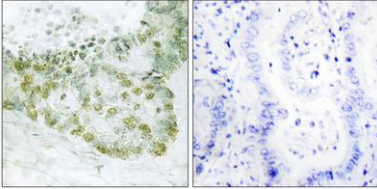
transforming growth factor beta 1 induced transcript 1(TGFB1I1) Homo sapiens This gene encodes a coactivator of the androgen receptor, a transcription factor which is activated by androgen and has a key role in male sexual differentiation. The encoded protein is thought to regulate androgen receptor activity and may have a role to play in the treatment of prostate cancer. Multiple transcript variants encoding different isoforms have been found for this gene. [provided by RefSeq, Sep 2009],



Western Blot analysis of NIH-3T3 cells using Hic-5 Polyclonal Antibody diluted at 1:1000



Immunofluorescence analysis of HeLa cells, using Hic-5 Antibody. The picture on the right is blocked with the synthesized peptide.



Immunohistochemistry analysis of paraffin-embedded human lung carcinoma tissue, using Hic-5 Antibody. The picture on the right is blocked with the synthesized peptide.