

**TRF1 (phospho Ser219) rabbit pAb****Cat#: orb770244 (Manual)**

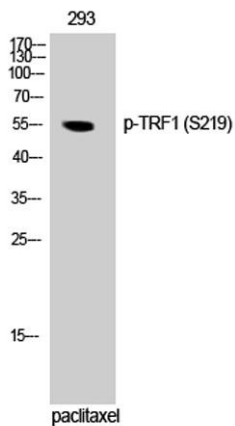
For research use only. Not intended for diagnostic use.

<b>Product Name</b>	TRF1 (phospho Ser219) rabbit pAb
<b>Host species</b>	Rabbit
<b>Applications</b>	WB;ELISA
<b>Species Cross-Reactivity</b>	Human;Mouse
<b>Recommended dilutions</b>	Western Blot: 1/500 - 1/2000. ELISA: 1/5000. Not yet tested in other applications.
<b>Immunogen</b>	The antiserum was produced against synthesized peptide derived from human Telomeric Repeat Binding Factor 1 around the phosphorylation site of Ser219. AA range:185-234
<b>Specificity</b>	Phospho-TRF1 (S219) Polyclonal Antibody detects endogenous levels of TRF1 protein only when phosphorylated at S219.
<b>Formulation</b>	Liquid in PBS containing 50% glycerol, 0.5% BSA and 0.02% sodium azide..
<b>Storage</b>	Store at -20°C. Avoid repeated freeze-thaw cycles.
<b>Protein Name</b>	Telomeric repeat-binding factor 1
<b>Gene Name</b>	TERF1
<b>Cellular localization</b>	Nucleus. Cytoplasm, cytoskeleton, spindle. Chromosome, telomere. Colocalizes with telomeric DNA in interphase and prophase cells. Telomeric localization decreases in metaphase, anaphase and telophase. Associates with the mitotic spindle.
<b>Purification</b>	The antibody was affinity-purified from rabbit antiserum by affinity-chromatography using epitope-specific immunogen.

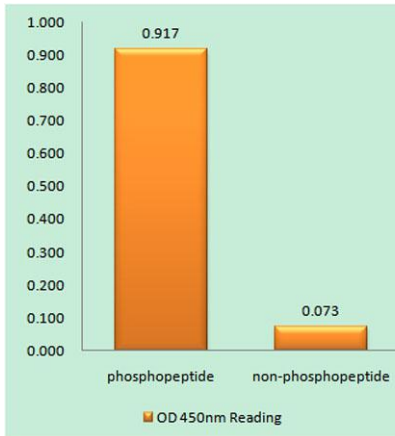
<b>Clonality</b>	Polyclonal
<b>Concentration</b>	1 mg/ml
<b>Observed band</b>	55kD
<b>Human Gene ID</b>	7013
<b>Human Swiss-Prot Number</b>	P54274
<b>Alternative Names</b>	TERF1; PIN2; TRBF1; TRF; TRF1; Telomeric repeat-binding factor 1; NIMA-interacting protein 2; TTAGGG repeat-binding factor 1; Telomeric protein Pin2/TRF1

## Background

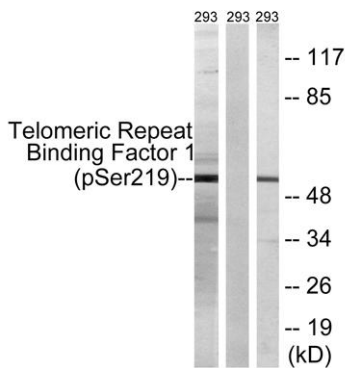
This gene encodes a telomere specific protein which is a component of the telomere nucleoprotein complex. This protein is present at telomeres throughout the cell cycle and functions as an inhibitor of telomerase, acting in cis to limit the elongation of individual chromosome ends. The protein structure contains a C-terminal Myb motif, a dimerization domain near its N-terminus and an acidic N-terminus. Two transcripts of this gene are alternatively spliced products. [provided by RefSeq, Jul 2008],



**Western Blot analysis of 293 cells using Phospho-TRF1 (S219) Polyclonal Antibody cells nucleus extracted by Minute TM Cytoplasmic and Nuclear Fractionation kit (SC-003, Invent biotech, MN, USA).**



**Enzyme-Linked Immunosorbent Assay (Phospho-ELISA) for Immunogen Phosphopeptide (Phospho-left) and Non-Phosphopeptide (Phospho-right), using Telomeric Repeat Binding Factor 1 (Phospho-Ser219) Antibody**



**Western blot analysis of lysates from 293 cells treated with paclitaxel 1uM 24h, using Telomeric Repeat Binding Factor 1 (Phospho-Ser219) Antibody. The lane on the right is blocked with the phospho peptide.**