

Contactin 2 rabbit pAb**Cat#: orb770220 (Manual)**

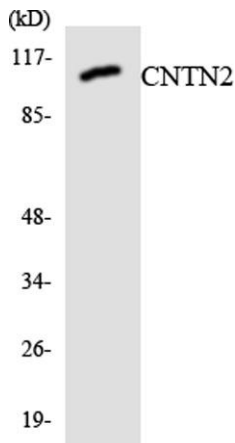
For research use only. Not intended for diagnostic use.

Product Name	Contactin 2 rabbit pAb
Host species	Rabbit
Applications	WB;ELISA
Species Cross-Reactivity	Human;Mouse;Rat
Recommended dilutions	Western Blot: 1/500 - 1/2000. ELISA: 1/40000. Not yet tested in other applications.
Immunogen	The antiserum was produced against synthesized peptide derived from human CNTN2. AA range:111-160
Specificity	Contactin 2 Polyclonal Antibody detects endogenous levels of Contactin 2 protein.
Formulation	Liquid in PBS containing 50% glycerol, 0.5% BSA and 0.02% sodium azide..
Storage	Store at -20°C. Avoid repeated freeze-thaw cycles.
Protein Name	Contactin-2
Gene Name	CNTN2
Cellular localization	Cell membrane; Lipid-anchor, GPI-anchor. Attached to the neuronal membrane by a GPI-anchor and is also released from neurons.
Purification	The antibody was affinity-purified from rabbit antiserum by affinity-chromatography using epitope-specific immunogen.
Clonality	Polyclonal

Concentration	1 mg/ml
Observed band	120kD
Human Gene ID	6900
Human Swiss-Prot Number	Q02246
Alternative Names	CNTN2; AXT; TAG1; TAX1; Contactin-2; Axonal glycoprotein TAG-1; Axonin-1; Transient axonal glycoprotein 1; TAX-1

Background

This gene encodes a member of the contactin family of proteins, part of the immunoglobulin superfamily of cell adhesion molecules. The encoded glycosylphosphatidylinositol (GPI)-anchored neuronal membrane protein plays a role in the proliferation, migration, and axon guidance of neurons of the developing cerebellum. A mutation in this gene may be associated with adult myoclonic epilepsy. [provided by RefSeq, Sep 2016],



Western blot analysis of the lysates from HUVEC cells using CNTN2 antibody.