

Krs-1/2 (phospho Thr183) rabbit pAb**Cat#: orb770181 (Manual)**

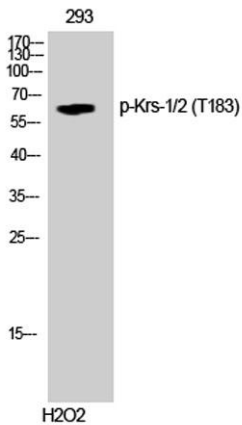
For research use only. Not intended for diagnostic use.

Product Name	Krs-1/2 (phospho Thr183) rabbit pAb
Host species	Rabbit
Applications	WB;IHC;IF;ELISA
Species Cross-Reactivity	Human;Mouse
Recommended dilutions	Western Blot: 1/500 - 1/2000. Immunohistochemistry: 1/100 - 1/300. ELISA: 1/40000. Not yet tested in other applications.
Immunogen	The antiserum was produced against synthesized peptide derived from human Mst1/2 around the phosphorylation site of Thr183. AA range:149-198
Specificity	Phospho-Krs-1/2 (T183) Polyclonal Antibody detects endogenous levels of Krs-1/2 protein only when phosphorylated at T183.
Formulation	Liquid in PBS containing 50% glycerol, 0.5% BSA and 0.02% sodium azide..
Storage	Store at -20°C. Avoid repeated freeze-thaw cycles.
Protein Name	Serine/threonine-protein kinase 3/4
Gene Name	STK3/STK4
Cellular localization	Cytoplasm . Nucleus . The caspase-cleaved form cycles between nucleus and cytoplasm (PubMed:19525978, PubMed:11278283). Phosphorylation at Thr-117 leads to inhibition of nuclear translocation (PubMed:19525978). .
Purification	The antibody was affinity-purified from rabbit antiserum by affinity-chromatography using epitope-specific immunogen.

Clonality	Polyclonal
Concentration	1 mg/ml
Observed band	60kD
Human Gene ID	6789
Human Swiss-Prot Number	Q13188/Q13043
Alternative Names	STK3; KRS1; MST2; Serine/threonine-protein kinase 3; Mammalian STE20-like protein kinase 2; MST-2; STE20-like kinase MST2; Serine/threonine-protein kinase Krs-1; STK4; KRS2; MST1; Serine/threonine-protein kinase 4; Mammalian STE20-like prot

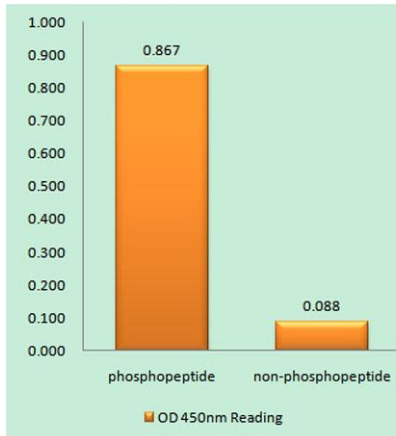
Background

serine/threonine kinase 3(STK3) Homo sapiens This gene encodes a serine/threonine protein kinase activated by proapoptotic molecules indicating the encoded protein functions as a growth suppressor. Cleavage of the protein product by caspase removes the inhibitory C-terminal portion. The N-terminal portion is transported to the nucleus where it homodimerizes to form the active kinase which promotes the condensation of chromatin during apoptosis. Multiple transcript variants encoding different isoforms have been found for this gene. [provided by RefSeq, Jan 2012],

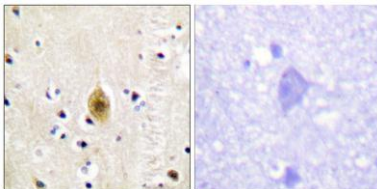


Western Blot analysis of 293 cells using Phospho-Krs-1/2 (T183) Polyclonal Antibody

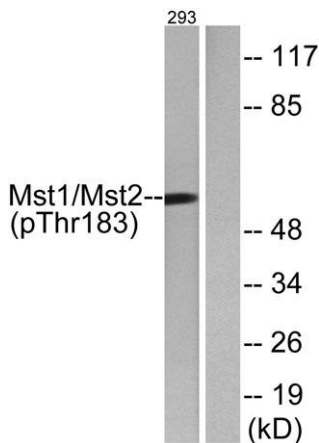
Explore. Bioreagents.



Enzyme-Linked Immunosorbent Assay (Phospho-ELISA) for Immunogen Phosphopeptide (Phospho-left) and Non-Phosphopeptide (Phospho-right), using Mst1/2 (Phospho-Thr183) Antibody



Immunohistochemistry analysis of paraffin-embedded human brain, using Mst1/2 (Phospho-Thr183) Antibody. The picture on the right is blocked with the phospho peptide.



Western blot analysis of lysates from 293 cells treated with H₂O₂ 100uM 15', using Mst1/2 (Phospho-Thr183) Antibody. The lane on the right is blocked with the phospho peptide.