

Stat4 (phospho Tyr693) rabbit pAb**Cat#: orb770172 (Manual)**

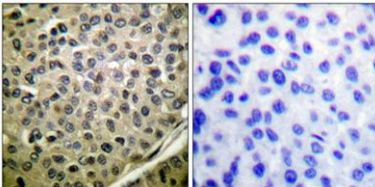
For research use only. Not intended for diagnostic use.

Product Name	Stat4 (phospho Tyr693) rabbit pAb
Host species	Rabbit
Applications	WB;IHC;IF;ELISA
Species Cross-Reactivity	Human;Mouse;Rat
Recommended dilutions	Western Blot: 1/500 - 1/2000. Immunohistochemistry: 1/100 - 1/300. ELISA: 1/20000. Not yet tested in other applications.
Immunogen	Synthesized phospho-peptide around the phosphorylation site of human Stat4 (phospho Tyr693)
Specificity	Phospho-Stat4 (Y693) Polyclonal Antibody detects endogenous levels of Stat4 protein only when phosphorylated at Y693.
Formulation	Liquid in PBS containing 50% glycerol, 0.5% BSA and 0.02% sodium azide..
Storage	Store at -20°C. Avoid repeated freeze-thaw cycles.
Protein Name	Signal transducer and activator of transcription 4
Gene Name	STAT4
Cellular localization	Cytoplasm. Nucleus. Translocated into the nucleus in response to phosphorylation.
Purification	The antibody was affinity-purified from rabbit antiserum by affinity-chromatography using epitope-specific immunogen.
Clonality	Polyclonal

Concentration	1 mg/ml
Observed band	85kD
Human Gene ID	6775
Human Swiss-Prot Number	Q14765
Alternative Names	STAT4; Signal transducer and activator of transcription 4

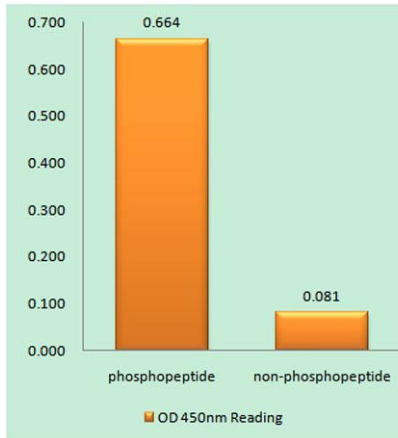
Background

The protein encoded by this gene is a member of the STAT family of transcription factors. In response to cytokines and growth factors, STAT family members are phosphorylated by the receptor associated kinases, and then form homo- or heterodimers that translocate to the cell nucleus where they act as transcription activators. This protein is essential for mediating responses to IL12 in lymphocytes, and regulating the differentiation of T helper cells. Mutations in this gene may be associated with systemic lupus erythematosus and rheumatoid arthritis. Alternate splicing results in multiple transcript variants that encode the same protein. [provided by RefSeq, Aug 2011],

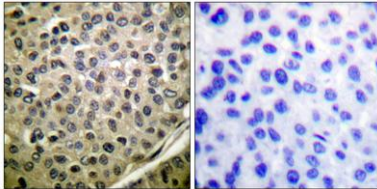


Immunohistochemical analysis of paraffin-embedded Human breast cancer. Antibody was diluted at 1:100(4° overnight). High-pressure and temperature Tris-EDTA,pH8.0 was used for antigen retrieval. Negative control (right) obtained from antibody was pre-absor

Explore. Bioreagents.



Enzyme-Linked Immunosorbent Assay (Phospho-ELISA) for Immunogen Phosphopeptide (Phospho-left) and Non-Phosphopeptide (Phospho-right), using STAT4 (Phospho-Tyr693) Antibody



Immunohistochemistry analysis of paraffin-embedded human breast cancer, using STAT4 (Phospho-Tyr693) Antibody. The picture on the right is blocked with the STAT4 (Phospho-Tyr693) peptide.