

FoxL2 (phospho Ser263) rabbit pAb**Cat#: orb770136 (Manual)**

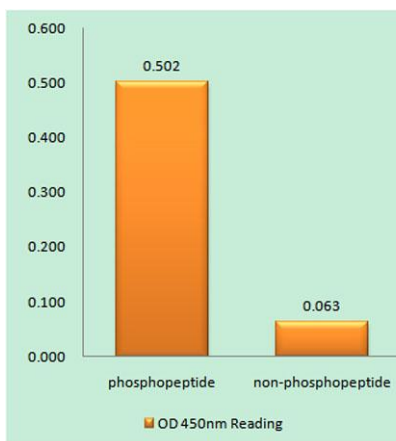
For research use only. Not intended for diagnostic use.

Product Name	FoxL2 (phospho Ser263) rabbit pAb
Host species	Rabbit
Applications	WB;ELISA
Species Cross-Reactivity	Human;Mouse
Recommended dilutions	Western Blot: 1/500 - 1/2000. ELISA: 1/20000. Not yet tested in other applications.
Immunogen	The antiserum was produced against synthesized peptide derived from human FOXL2 around the phosphorylation site of Ser263. AA range:229-278
Specificity	Phospho-FoxL2 (S263) Polyclonal Antibody detects endogenous levels of FoxL2 protein only when phosphorylated at S263.
Formulation	Liquid in PBS containing 50% glycerol, 0.5% BSA and 0.02% sodium azide..
Storage	Store at -20°C. Avoid repeated freeze-thaw cycles.
Protein Name	Forkhead box protein L2
Gene Name	FOXL2
Cellular localization	Nucleus .
Purification	The antibody was affinity-purified from rabbit antiserum by affinity-chromatography using epitope-specific immunogen.
Clonality	Polyclonal

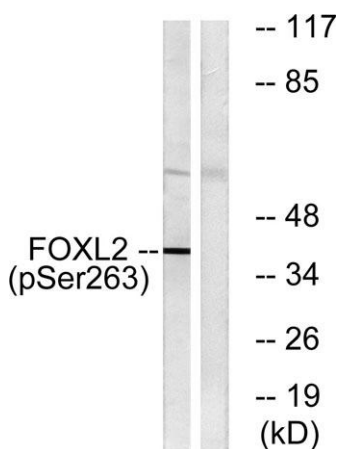
Concentration	1 mg/ml
Observed band	40kD
Human Gene ID	668
Human Swiss-Prot Number	P58012
Alternative Names	FOXL2; Forkhead box protein L2

Background

This gene encodes a forkhead transcription factor. The protein contains a fork-head DNA-binding domain and may play a role in ovarian development and function. Expansion of a polyalanine repeat region and other mutations in this gene are a cause of blepharophimosis syndrome and premature ovarian failure 3. [provided by RefSeq, Jul 2016],



Enzyme-Linked Immunosorbent Assay (Phospho-ELISA) for Immunogen Phosphopeptide (Phospho-left) and Non-Phosphopeptide (Phospho-right), using FOXL2 (Phospho-Ser263) Antibody



Western blot analysis of lysates from K562 cells treated with Na₃VO₄ 0.3mM 40', using FOXL2 (Phospho-Ser263) Antibody. The lane on the right is blocked with the phospho peptide.