

**Sox-9 (phospho Ser181) rabbit pAb****Cat#: orb770129 (Manual)**

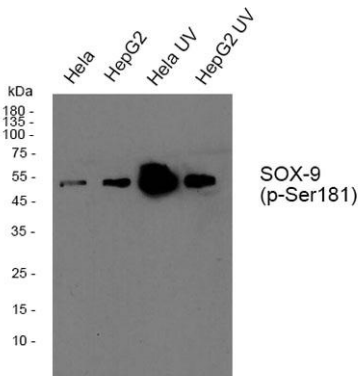
For research use only. Not intended for diagnostic use.

<b>Product Name</b>	Sox-9 (phospho Ser181) rabbit pAb
<b>Host species</b>	Rabbit
<b>Applications</b>	WB;IHC;IF;ELISA
<b>Species Cross-Reactivity</b>	Human;Mouse
<b>Recommended dilutions</b>	Western Blot: 1/500 - 1/2000. Immunohistochemistry: 1/100 - 1/300. Immunofluorescence: 1/200 - 1/1000. ELISA: 1/5000. Not yet tested in other applications.
<b>Immunogen</b>	The antiserum was produced against synthesized peptide derived from human SOX-9 around the phosphorylation site of Ser181. AA range:147-196
<b>Specificity</b>	Phospho-Sox-9 (S181) Polyclonal Antibody detects endogenous levels of Sox-9 protein only when phosphorylated at S181.
<b>Formulation</b>	Liquid in PBS containing 50% glycerol, 0.5% BSA and 0.02% sodium azide..
<b>Storage</b>	Store at -20°C. Avoid repeated freeze-thaw cycles.
<b>Protein Name</b>	Transcription factor SOX-9
<b>Gene Name</b>	SOX9
<b>Cellular localization</b>	Nucleus .
<b>Purification</b>	The antibody was affinity-purified from rabbit antiserum by affinity-chromatography using epitope-specific immunogen.
<b>Clonality</b>	Polyclonal

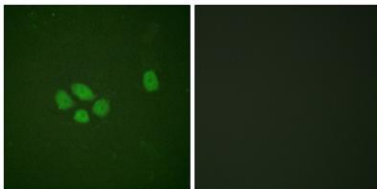
<b>Concentration</b>	1 mg/ml
<b>Observed band</b>	65kD
<b>Human Gene ID</b>	6662
<b>Human Swiss-Prot Number</b>	P48436
<b>Alternative Names</b>	SOX9; Transcription factor SOX-9

### Background

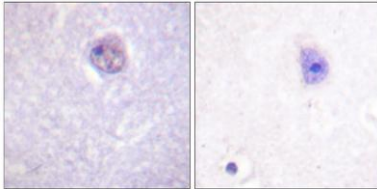
**SRY-box 9(SOX9) Homo sapiens** The protein encoded by this gene recognizes the sequence CCTTGAG along with other members of the HMG-box class DNA-binding proteins. It acts during chondrocyte differentiation and, with steroidogenic factor 1, regulates transcription of the anti-Muellerian hormone (AMH) gene. Deficiencies lead to the skeletal malformation syndrome campomelic dysplasia, frequently with sex reversal. [provided by RefSeq, Jul 2008],



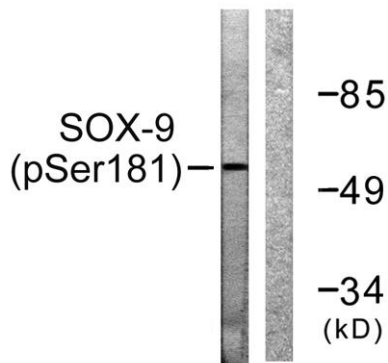
**Western blot analysis of Sox-9 (phospho Ser181) Polyclonal Antibody, using HeLa, HepG2 cell treated or untreated with UV, 4° over night, secondary antibody(cat: RS0002 was diluted at 1:10000, 37° 1hour.**



**Immunofluorescence analysis of A549 cells, using SOX-9 (Phospho-Ser181) Antibody. The picture on the right is blocked with the phospho peptide.**



Immunohistochemistry analysis of paraffin-embedded human brain, using SOX-9 (Phospho-Ser181) Antibody. The picture on the right is blocked with the phospho peptide.



Western blot analysis of lysates from 293 cells treated with PBS 60', using SOX-9 (Phospho-Ser181) Antibody. The lane on the right is blocked with the phospho peptide.