

**Sos 2 rabbit pAb****Cat#: orb770128 (Manual)**

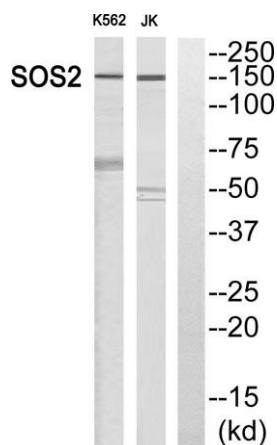
For research use only. Not intended for diagnostic use.

<b>Product Name</b>	Sos 2 rabbit pAb
<b>Host species</b>	Rabbit
<b>Applications</b>	WB;ELISA;IHC
<b>Species Cross-Reactivity</b>	Human;Rat;Mouse;
<b>Recommended dilutions</b>	WB 1:500-2000;IHC-p 1:50-300; ELISA 2000-20000
<b>Immunogen</b>	The antiserum was produced against synthesized peptide derived from human SOS2. AA range:631-680
<b>Specificity</b>	Sos 2 Polyclonal Antibody detects endogenous levels of Sos 2 protein.
<b>Formulation</b>	Liquid in PBS containing 50% glycerol, 0.5% BSA and 0.02% sodium azide..
<b>Storage</b>	Store at -20°C. Avoid repeated freeze-thaw cycles.
<b>Protein Name</b>	Son of sevenless homolog 2
<b>Gene Name</b>	SOS2
<b>Cellular localization</b>	intracellular,cytosol,
<b>Purification</b>	The antibody was affinity-purified from rabbit antiserum by affinity-chromatography using epitope-specific immunogen.
<b>Clonality</b>	Polyclonal

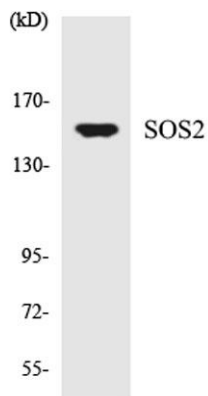
<b>Concentration</b>	1 mg/ml
<b>Observed band</b>	150kD
<b>Human Gene ID</b>	6655
<b>Human Swiss-Prot Number</b>	Q07890
<b>Alternative Names</b>	SOS2; Son of sevenless homolog 2; SOS-2

## Background

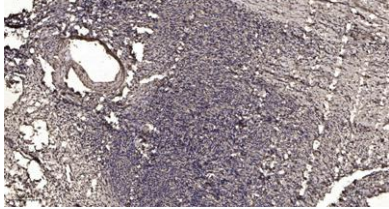
This gene encodes a regulatory protein that is involved in the positive regulation of ras proteins. Mutations in this gene are associated with Noonan Syndrome-9. [provided by RefSeq, Jul 2016],



Western blot analysis of SOS2 Antibody. The lane on the right is blocked with the SOS2 peptide.



Western blot analysis of the lysates from HT-29 cells using SOS2 antibody.



**Immunohistochemical analysis of paraffin-embedded human oophoroma. 1, Antibody was diluted at 1:200(4° overnight). 2, Tris-EDTA,pH9.0 was used for antigen retrieval. 3,Secondary antibody was diluted at 1:200(room temperature, 45min).**