

Bmx (phospho Tyr40) rabbit pAb**Cat#: orb770116 (Manual)**

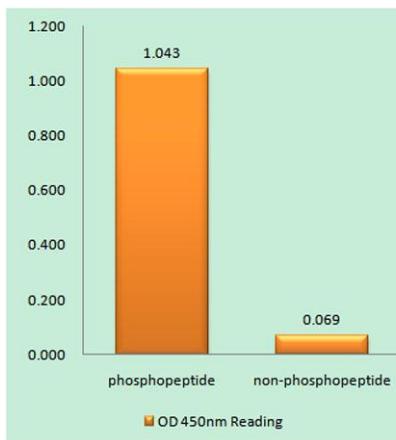
For research use only. Not intended for diagnostic use.

Product Name	Bmx (phospho Tyr40) rabbit pAb
Host species	Rabbit
Applications	WB;IHC;IF;ELISA
Species Cross-Reactivity	Human;Mouse
Recommended dilutions	Western Blot: 1/500 - 1/2000. Immunohistochemistry: 1/100 - 1/300. Immunofluorescence: 1/200 - 1/1000. ELISA: 1/40000. Not yet tested in other applications.
Immunogen	The antiserum was produced against synthesized peptide derived from human ETK around the phosphorylation site of Tyr40. AA range:6-55
Specificity	Phospho-Bmx (Y40) Polyclonal Antibody detects endogenous levels of Bmx protein only when phosphorylated at Y40.
Formulation	Liquid in PBS containing 50% glycerol, 0.5% BSA and 0.02% sodium azide..
Storage	Store at -20°C. Avoid repeated freeze-thaw cycles.
Protein Name	Cytoplasmic tyrosine-protein kinase BMX
Gene Name	BMX
Cellular localization	Cytoplasm . Localizes to the edges of spreading cells when complexed with BCAR1.
Purification	The antibody was affinity-purified from rabbit antiserum by affinity-chromatography using epitope-specific immunogen.
Clonality	Polyclonal

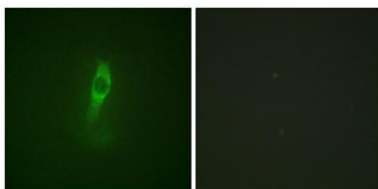
Explore. Bioreagents.

Concentration	1 mg/ml
Observed band	78kD
Human Gene ID	660
Human Swiss-Prot Number	P51813
Alternative Names	BMX; Cytoplasmic tyrosine-protein kinase BMX; Bone marrow tyrosine kinase gene in chromosome X protein; Epithelial and endothelial tyrosine kinase; ETK; NTK38

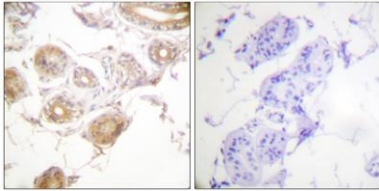
Background This gene encodes a non-receptor tyrosine kinase belonging to the Tec kinase family. The protein contains a PH-like domain, which mediates membrane targeting by binding to phosphatidylinositol 3,4,5-triphosphate (PIP3), and a SH2 domain that binds to tyrosine-phosphorylated proteins and functions in signal transduction. The protein is implicated in several signal transduction pathways including the Stat pathway, and regulates differentiation and tumorigenicity of several types of cancer cells. Alternatively spliced transcript variants have been found for this gene. [provided by RefSeq, Mar 2016],



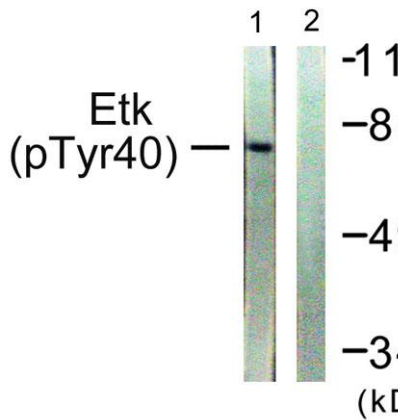
Enzyme-Linked Immunosorbent Assay (Phospho-ELISA) for Immunogen Phosphopeptide (Phospho-left) and Non-Phosphopeptide (Phospho-right), using ETK (Phospho-Tyr40) Antibody



Immunofluorescence analysis of NIH/3T3 cells, using ETK (Phospho-Tyr40) Antibody. The picture on the right is blocked with the phospho peptide.



Immunohistochemistry analysis of paraffin-embedded human skin, using ETK (Phospho-Tyr40) Antibody. The picture on the right is blocked with the phospho peptide.



Western blot analysis of lysates from HepG2 cells, using ETK (Phospho-Tyr40) Antibody. The lane on the right is blocked with the phospho peptide.