

Bmx (phospho Tyr566) rabbit pAb**Cat#: orb770115 (Manual)**

For research use only. Not intended for diagnostic use.

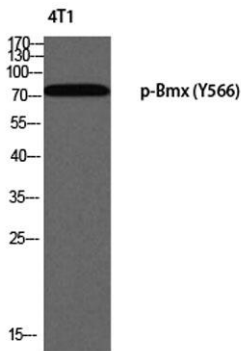
| | |
|---------------------------------|---|
| Product Name | Bmx (phospho Tyr566) rabbit pAb |
| Host species | Rabbit |
| Applications | WB;IHC;IF;ELISA |
| Species Cross-Reactivity | Human;Mouse |
| Recommended dilutions | Western Blot: 1/500 - 1/2000. Immunohistochemistry: 1/100 - 1/300. ELISA: 1/10000. Not yet tested in other applications. |
| Immunogen | The antiserum was produced against synthesized peptide derived from human ETK around the phosphorylation site of Tyr566. AA range:532-581 |
| Specificity | Phospho-Bmx (Y566) Polyclonal Antibody detects endogenous levels of Bmx protein only when phosphorylated at Y566. |
| Formulation | Liquid in PBS containing 50% glycerol, 0.5% BSA and 0.02% sodium azide.. |
| Storage | Store at -20°C. Avoid repeated freeze-thaw cycles. |
| Protein Name | Cytoplasmic tyrosine-protein kinase BMX |
| Gene Name | BMX |
| Cellular localization | Cytoplasm . Localizes to the edges of spreading cells when complexed with BCAR1. |
| Purification | The antibody was affinity-purified from rabbit antiserum by affinity-chromatography using epitope-specific immunogen. |
| Clonality | Polyclonal |

Explore. Bioreagents.

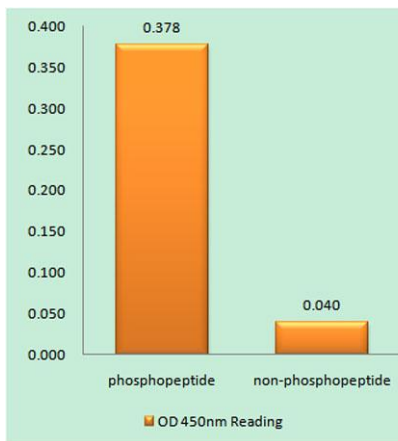
| | |
|--------------------------------|--|
| Concentration | 1 mg/ml |
| Observed band | 78kD |
| Human Gene ID | 660 |
| Human Swiss-Prot Number | P51813 |
| Alternative Names | BMX; Cytoplasmic tyrosine-protein kinase BMX; Bone marrow tyrosine kinase gene in chromosome X protein; Epithelial and endothelial tyrosine kinase; ETK; NTK38 |

Background

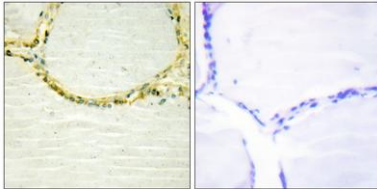
This gene encodes a non-receptor tyrosine kinase belonging to the Tec kinase family. The protein contains a PH-like domain, which mediates membrane targeting by binding to phosphatidylinositol 3,4,5-triphosphate (PIP3), and a SH2 domain that binds to tyrosine-phosphorylated proteins and functions in signal transduction. The protein is implicated in several signal transduction pathways including the Stat pathway, and regulates differentiation and tumorigenicity of several types of cancer cells. Alternatively spliced transcript variants have been found for this gene. [provided by RefSeq, Mar 2016],



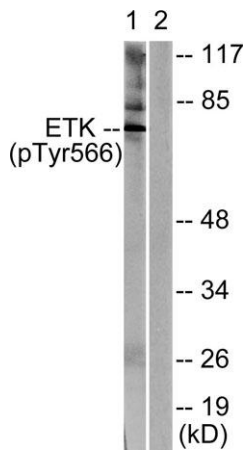
Western blot analysis of 4T1 using p-Bmx (Y566) antibody.



Enzyme-Linked Immunosorbent Assay (Phospho-ELISA) for Immunogen Phosphopeptide (Phospho-left) and Non-Phosphopeptide (Phospho-right), using ETK (Phospho-Tyr566) Antibody



Immunohistochemistry analysis of paraffin-embedded human thyroid gland, using ETK (Phospho-Tyr566) Antibody. The picture on the right is blocked with the phospho peptide.



Western blot analysis of lysates from HeLa cells treated with Serum 20% 15', using ETK (Phospho-Tyr566) Antibody. The lane on the right is blocked with the phospho peptide.