

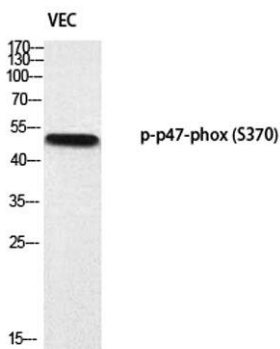
**p47-phox (phospho Ser370) rabbit pAb****Cat#: orb770099 (Manual)**

For research use only. Not intended for diagnostic use.

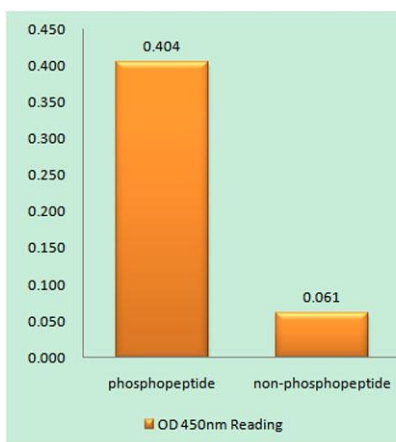
<b>Product Name</b>	p47-phox (phospho Ser370) rabbit pAb
<b>Host species</b>	Rabbit
<b>Applications</b>	WB;IHC;IF;ELISA
<b>Species Cross-Reactivity</b>	Human;Mouse;Rat
<b>Recommended dilutions</b>	Western Blot: 1/500 - 1/2000. Immunohistochemistry: 1/100 - 1/300. ELISA: 1/5000. Not yet tested in other applications.
<b>Immunogen</b>	The antiserum was produced against synthesized peptide derived from human p47 phox around the phosphorylation site of Ser370. AA range:341-390
<b>Specificity</b>	Phospho-p47-phox (S370) Polyclonal Antibody detects endogenous levels of p47-phox protein only when phosphorylated at S370.
<b>Formulation</b>	Liquid in PBS containing 50% glycerol, 0.5% BSA and 0.02% sodium azide..
<b>Storage</b>	Store at -20°C. Avoid repeated freeze-thaw cycles.
<b>Protein Name</b>	Neutrophil cytosol factor 1
<b>Gene Name</b>	NCF1
<b>Cellular localization</b>	Cytoplasm, cytosol . Membrane ; Peripheral membrane protein ; Cytoplasmic side .
<b>Purification</b>	The antibody was affinity-purified from rabbit antiserum by affinity-chromatography using epitope-specific immunogen.
<b>Clonality</b>	Polyclonal

Explore. Bioreagents.

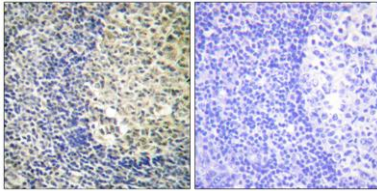
<b>Concentration</b>	1 mg/ml
<b>Observed band</b>	
<b>Human Gene ID</b>	653361
<b>Human Swiss-Prot Number</b>	P14598
<b>Alternative Names</b>	NCF1; NOXO2; SH3PXD1A; Neutrophil cytosol factor 1; NCF-1; 47 kDa autosomal chronic granulomatous disease protein; 47 kDa neutrophil oxidase factor; NCF-47K; Neutrophil NADPH oxidase factor 1; Nox organizer 2; Nox-organizing protein 2; SH3
<b>Background</b>	The protein encoded by this gene is a 47 kDa cytosolic subunit of neutrophil NADPH oxidase. This oxidase is a multicomponent enzyme that is activated to produce superoxide anion. Mutations in this gene have been associated with chronic granulomatous disease. [provided by RefSeq, Jul 2008],



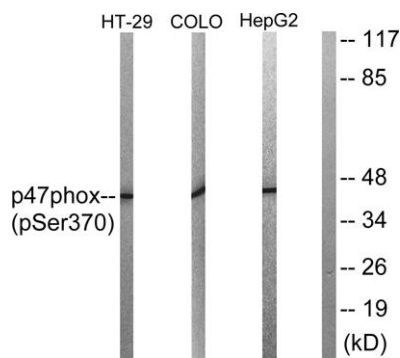
Western blot analysis of VEC using p-p47-phox (S370) antibody.



Enzyme-Linked Immunosorbent Assay (Phospho-ELISA) for Immunogen Phosphopeptide (Phospho-left) and Non-Phosphopeptide (Phospho-right), using p47 phox (Phospho-Ser370) Antibody



Immunohistochemistry analysis of paraffin-embedded human tonsil, using p47 phox (Phospho-Ser370) Antibody. The picture on the right is blocked with the phospho peptide.



Western blot analysis of p47 phox (Phospho-Ser370) Antibody. The lane on the right is blocked with the p47 phox (Phospho-Ser370) peptide.