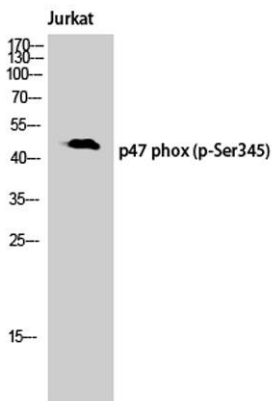


**p47-phox (phospho Ser345) rabbit pAb****Cat#: orb770096 (Manual)**

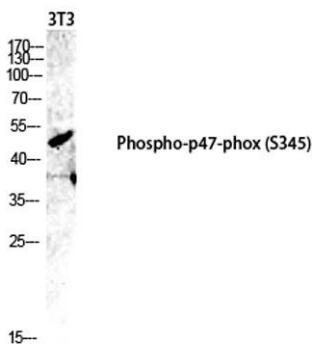
For research use only. Not intended for diagnostic use.

<b>Product Name</b>	p47-phox (phospho Ser345) rabbit pAb
<b>Host species</b>	Rabbit
<b>Applications</b>	WB;IHC;IF;ELISA
<b>Species Cross-Reactivity</b>	Human;Rat;Mouse;
<b>Recommended dilutions</b>	Western Blot: 1/500 - 1/2000. Immunohistochemistry: 1/100 - 1/300. ELISA: 1/5000. Not yet tested in other applications.
<b>Immunogen</b>	The antiserum was produced against synthesized peptide derived from human p47 phox around the phosphorylation site of Ser345. AA range:311-360
<b>Specificity</b>	Phospho-p47-phox (S345) Polyclonal Antibody detects endogenous levels of p47-phox protein only when phosphorylated at S345.
<b>Formulation</b>	Liquid in PBS containing 50% glycerol, 0.5% BSA and 0.02% sodium azide..
<b>Storage</b>	Store at -20°C. Avoid repeated freeze-thaw cycles.
<b>Protein Name</b>	Neutrophil cytosol factor 1
<b>Gene Name</b>	NCF1
<b>Cellular localization</b>	Cytoplasm, cytosol . Membrane ; Peripheral membrane protein ; Cytoplasmic side .
<b>Purification</b>	The antibody was affinity-purified from rabbit antiserum by affinity-chromatography using epitope-specific immunogen.
<b>Clonality</b>	Polyclonal

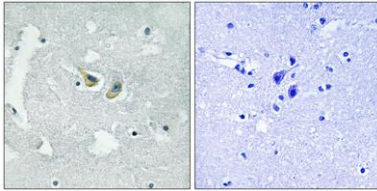
<b>Concentration</b>	1 mg/ml
<b>Observed band</b>	45kD
<b>Human Gene ID</b>	653361
<b>Human Swiss-Prot Number</b>	P14598
<b>Alternative Names</b>	NCF1; NOXO2; SH3PXD1A; Neutrophil cytosol factor 1; NCF-1; 47 kDa autosomal chronic granulomatous disease protein; 47 kDa neutrophil oxidase factor; NCF-47K; Neutrophil NADPH oxidase factor 1; Nox organizer 2; Nox-organizing protein 2; SH3
<b>Background</b>	The protein encoded by this gene is a 47 kDa cytosolic subunit of neutrophil NADPH oxidase. This oxidase is a multicomponent enzyme that is activated to produce superoxide anion. Mutations in this gene have been associated with chronic granulomatous disease. [provided by RefSeq, Jul 2008],



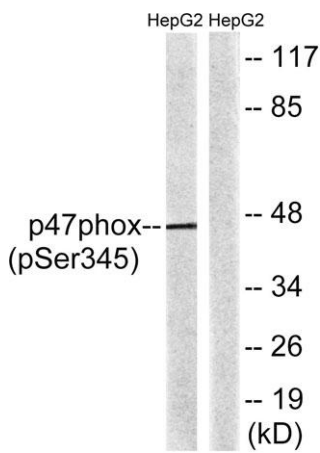
**Western Blot analysis of Jurkat cells using Phospho-p47-phox (S345) Polyclonal Antibody diluted at 1:1000**



**Western blot analysis of 3T3 lysis using Phospho-p47-phox (S345) antibody. Antibody was diluted at 1:1000**



**Immunohistochemistry analysis of paraffin-embedded human brain, using p47 phox (Phospho-Ser345) Antibody. The picture on the right is blocked with the phospho peptide.**



**Western blot analysis of lysates from HepG2 cells treated with TNF 20ng/ml 5', using p47 phox (Phospho-Ser345) Antibody. The lane on the right is blocked with the phospho peptide.**