

p47-phox (phospho Ser304) rabbit pAb**Cat#: orb770095 (Manual)**

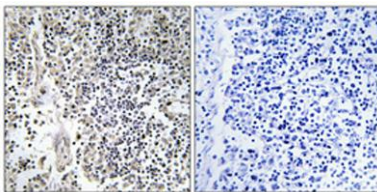
For research use only. Not intended for diagnostic use.

| | |
|---------------------------------|---|
| Product Name | p47-phox (phospho Ser304) rabbit pAb |
| Host species | Rabbit |
| Applications | WB;IHC;IF;ELISA |
| Species Cross-Reactivity | Human;Monkey |
| Recommended dilutions | Western Blot: 1/500 - 1/2000. Immunohistochemistry: 1/100 - 1/300. ELISA: 1/20000. Not yet tested in other applications. |
| Immunogen | The antiserum was produced against synthesized peptide derived from human Neutrophil Cytosol Factor 1 around the phosphorylation site of Ser304. AA range:281-330 |
| Specificity | Phospho-p47-phox (S304) Polyclonal Antibody detects endogenous levels of p47-phox protein only when phosphorylated at S304. |
| Formulation | Liquid in PBS containing 50% glycerol, 0.5% BSA and 0.02% sodium azide.. |
| Storage | Store at -20°C. Avoid repeated freeze-thaw cycles. |
| Protein Name | Neutrophil cytosol factor 1 |
| Gene Name | NCF1 |
| Cellular localization | Cytoplasm, cytosol . Membrane ; Peripheral membrane protein ; Cytoplasmic side . |
| Purification | The antibody was affinity-purified from rabbit antiserum by affinity-chromatography using epitope-specific immunogen. |
| Clonality | Polyclonal |

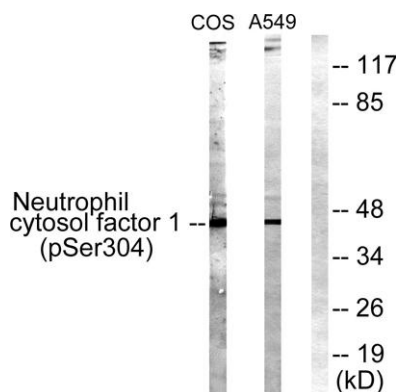
Explore. Bioreagents.

| | |
|--------------------------------|---|
| Concentration | 1 mg/ml |
| Observed band | 44kD |
| Human Gene ID | 653361 |
| Human Swiss-Prot Number | P14598 |
| Alternative Names | NCF1; NOXO2; SH3PXD1A; Neutrophil cytosol factor 1; NCF-1; 47 kDa autosomal chronic granulomatous disease protein; 47 kDa neutrophil oxidase factor; NCF-47K; Neutrophil NADPH oxidase factor 1; Nox organizer 2; Nox-organizing protein 2; SH3 |

Background The protein encoded by this gene is a 47 kDa cytosolic subunit of neutrophil NADPH oxidase. This oxidase is a multicomponent enzyme that is activated to produce superoxide anion. Mutations in this gene have been associated with chronic granulomatous disease. [provided by RefSeq, Jul 2008],



Immunohistochemical analysis of paraffin-embedded Human lung cancer. Antibody was diluted at 1:100(4° overnight). High-pressure and temperature Tris-EDTA,pH8.0 was used for antigen retrieval. Negative contrl (right) obtained from antibody was pre-absorbe



Western blot analysis of lysates from COS7 cells treated with UV 15' and A549 cells, using Neutrophil Cytosol Factor 1 (Phospho-Ser304) Antibody. The lane on the right is blocked with the phospho peptide.