

GABA T-1 rabbit pAb**Cat#: orb770093 (Manual)**

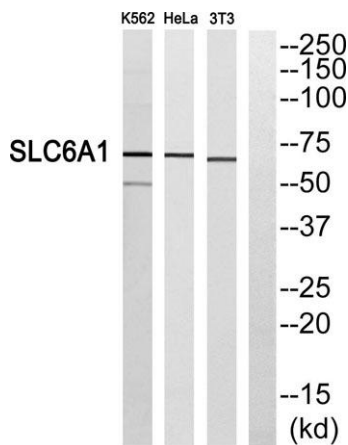
For research use only. Not intended for diagnostic use.

Product Name	GABA T-1 rabbit pAb
Host species	Rabbit
Applications	WB;ELISA
Species Cross-Reactivity	Human;Mouse;Rat
Recommended dilutions	Western Blot: 1/500 - 1/2000. ELISA: 1/40000. Not yet tested in other applications.
Immunogen	The antiserum was produced against synthesized peptide derived from human SLC6A1. AA range:381-430
Specificity	GABA T-1 Polyclonal Antibody detects endogenous levels of GABA T-1 protein.
Formulation	Liquid in PBS containing 50% glycerol, 0.5% BSA and 0.02% sodium azide..
Storage	Store at -20°C. Avoid repeated freeze-thaw cycles.
Protein Name	Sodium- and chloride-dependent GABA transporter 1
Gene Name	SLC6A1
Cellular localization	Cell membrane; Multi-pass membrane protein. Membrane; Multi-pass membrane protein. Cell junction, synapse, presynapse . Localized at the plasma membrane and in a subset of intracellular vesicles. Localized at the presynaptic terminals of interneurons (By
Purification	The antibody was affinity-purified from rabbit antiserum by affinity-chromatography using epitope-specific immunogen.

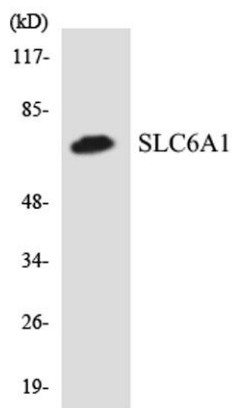
Clonality	Polyclonal
Concentration	1 mg/ml
Observed band	67kD
Human Gene ID	6529
Human Swiss-Prot Number	P30531
Alternative Names	SLC6A1; GABATR; GABT1; GAT1; Sodium- and chloride-dependent GABA transporter 1; GAT-1; Solute carrier family 6 member 1

Background

The SLC6A1 gene encodes a gamma-aminobutyric acid (GABA) transporter, which removes GABA from the synaptic cleft (Hirunsatit et al., 2009 [PubMed 19077666]).[supplied by OMIM, Jul 2009],



Western blot analysis of SLC6A1 Antibody. The lane on the right is blocked with the SLC6A1 peptide.



Western blot analysis of the lysates from HeLa cells using SLC6A1 antibody.