

**APC1 (phospho Ser355) rabbit pAb****Cat#: orb770066 (Manual)**

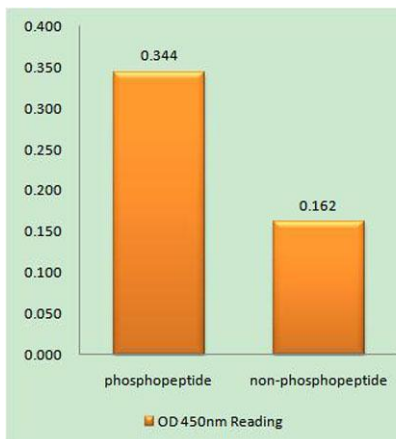
For research use only. Not intended for diagnostic use.

<b>Product Name</b>	APC1 (phospho Ser355) rabbit pAb
<b>Host species</b>	Rabbit
<b>Applications</b>	IHC;IF;ELISA
<b>Species Cross-Reactivity</b>	Human;Mouse
<b>Recommended dilutions</b>	Immunohistochemistry: 1/100 - 1/300. ELISA: 1/5000. Not yet tested in other applications.
<b>Immunogen</b>	The antiserum was produced against synthesized peptide derived from human APC1 around the phosphorylation site of Ser355. AA range:321-370
<b>Specificity</b>	Phospho-APC1 (S355) Polyclonal Antibody detects endogenous levels of APC1 protein only when phosphorylated at S355.
<b>Formulation</b>	Liquid in PBS containing 50% glycerol, 0.5% BSA and 0.02% sodium azide..
<b>Storage</b>	Store at -20°C. Avoid repeated freeze-thaw cycles.
<b>Protein Name</b>	Anaphase-promoting complex subunit 1
<b>Gene Name</b>	ANAPC1
<b>Cellular localization</b>	nucleoplasm,anaphase-promoting complex,cytosol,
<b>Purification</b>	The antibody was affinity-purified from rabbit antiserum by affinity-chromatography using epitope-specific immunogen.
<b>Clonality</b>	Polyclonal

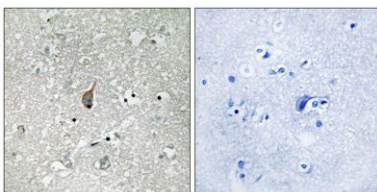
<b>Concentration</b>	1 mg/ml
<b>Observed band</b>	
<b>Human Gene ID</b>	64682
<b>Human Swiss-Prot Number</b>	Q9H1A4
<b>Alternative Names</b>	ANAPC1; TSG24; Anaphase-promoting complex subunit 1; APC1; Cyclosome subunit 1; Mitotic checkpoint regulator; Testis-specific gene 24 protein

## Background

This gene encodes a subunit of the anaphase-promoting complex. This complex is an E3 ubiquitin ligase that regulates progression through the metaphase to anaphase portion of the cell cycle by ubiquitinating proteins which targets them for degradation. [provided by RefSeq, Dec 2011],



**Enzyme-Linked Immunosorbent Assay (Phospho-ELISA) for Immunogen Phosphopeptide (Phospho-left) and Non-Phosphopeptide (Phospho-right), using APC1 (Phospho-Ser355) Antibody**



**Immunohistochemistry analysis of paraffin-embedded human brain, using APC1 (Phospho-Ser355) Antibody. The picture on the right is blocked with the phosphopeptide.**