

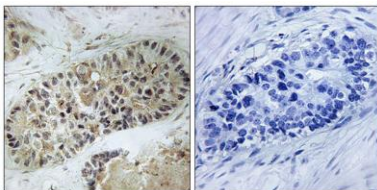
Artemis (phospho Ser516) rabbit pAb**Cat#: orb770047 (Manual)**

For research use only. Not intended for diagnostic use.

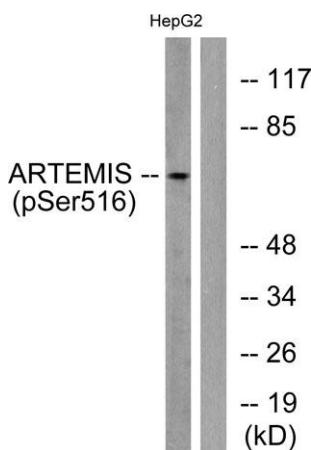
Product Name	Artemis (phospho Ser516) rabbit pAb
Host species	Rabbit
Applications	WB;IHC;IF;ELISA
Species Cross-Reactivity	Human;Mouse
Recommended dilutions	Western Blot: 1/500 - 1/2000. Immunohistochemistry: 1/100 - 1/300. ELISA: 1/5000. Not yet tested in other applications.
Immunogen	The antiserum was produced against synthesized peptide derived from human Artemis around the phosphorylation site of Ser516. AA range:482-531
Specificity	Phospho-Artemis (S516) Polyclonal Antibody detects endogenous levels of Artemis protein only when phosphorylated at S516.
Formulation	Liquid in PBS containing 50% glycerol, 0.5% BSA and 0.02% sodium azide..
Storage	Store at -20°C. Avoid repeated freeze-thaw cycles.
Protein Name	Protein artemis
Gene Name	DCLRE1C
Cellular localization	Nucleus .
Purification	The antibody was affinity-purified from rabbit antiserum by affinity-chromatography using epitope-specific immunogen.
Clonality	Polyclonal

Concentration	1 mg/ml
Observed band	78kD
Human Gene ID	64421
Human Swiss-Prot Number	Q96SD1
Alternative Names	DCLRE1C; ARTEMIS; ASCID; SCIDA; SNM1C; Protein artemis; DNA cross-link repair 1C protein; Protein A-SCID; SNM1 homolog C; hSNM1C; SNM1-like protein

Background This gene encodes a nuclear protein that is involved in V(D)J recombination and DNA repair. The encoded protein has single-strand-specific 5'-3' exonuclease activity; it also exhibits endonuclease activity on 5' and 3' overhangs and hairpins. The protein also functions in the regulation of the cell cycle in response to DNA damage. Mutations in this gene can cause Athabaskan-type severe combined immunodeficiency (SCIDA) and Omenn syndrome. Alternative splicing results in multiple transcript variants. [provided by RefSeq, Jan 2014],



Immunohistochemistry analysis of paraffin-embedded human lung carcinoma, using Artemis (Phospho-Ser516) Antibody. The picture on the right is blocked with the phospho peptide.



Western blot analysis of lysates from HepG2 cells treated with EGF 200ng/ml 30', using Artemis (Phospho-Ser516) Antibody. The lane on the right is blocked with the phospho peptide.



Explore. Bioreagents.

www.biorbyt.com