

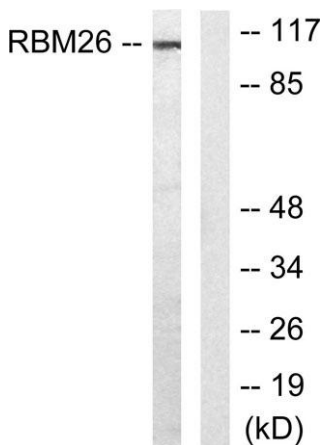
**RBM26 rabbit pAb****Cat#: orb770021 (Manual)**

For research use only. Not intended for diagnostic use.

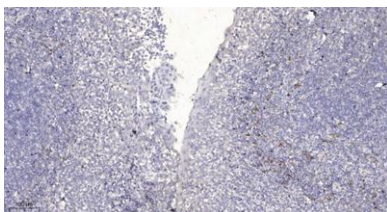
<b>Product Name</b>	RBM26 rabbit pAb
<b>Host species</b>	Rabbit
<b>Applications</b>	WB;IHC;IF;ELISA
<b>Species Cross-Reactivity</b>	Human;Mouse
<b>Recommended dilutions</b>	Western Blot: 1/500 - 1/2000. ELISA: 1/10000. Not yet tested in other applications.
<b>Immunogen</b>	The antiserum was produced against synthesized peptide derived from human RBM26. AA range:711-760
<b>Specificity</b>	RBM26 Polyclonal Antibody detects endogenous levels of RBM26 protein.
<b>Formulation</b>	Liquid in PBS containing 50% glycerol, 0.5% BSA and 0.02% sodium azide..
<b>Storage</b>	Store at -20°C. Avoid repeated freeze-thaw cycles.
<b>Protein Name</b>	RNA-binding protein 26
<b>Gene Name</b>	RBM26
<b>Cellular localization</b>	
<b>Purification</b>	The antibody was affinity-purified from rabbit antiserum by affinity-chromatography using epitope-specific immunogen.
<b>Clonality</b>	Polyclonal

<b>Concentration</b>	1 mg/ml
<b>Observed band</b>	113kD
<b>Human Gene ID</b>	64062
<b>Human Swiss-Prot Number</b>	Q5T8P6
<b>Alternative Names</b>	RBM26; C13orf10; RNA-binding protein 26; CTCL tumor antigen se70-2; RNA-binding motif protein 26

**Background** similarity:Contains 1 C3H1-type zinc finger.,similarity:Contains 2 RRM (RNA recognition motif) domains.,



**Western blot analysis of lysates from Jurkat cells, using RBM26 Antibody. The lane on the right is blocked with the synthesized peptide.**



**Immunohistochemical analysis of paraffin-embedded human tonsil. 1, Antibody was diluted at 1:200(4° overnight). 2, Tris-EDTA,pH9.0 was used for antigen retrieval. 3,Secondary antibody was diluted at 1:200(room temperature, 30min).**