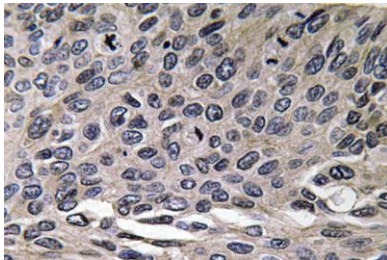


MIP-1 α rabbit pAb**Cat#: orb770003 (Manual)**

For research use only. Not intended for diagnostic use.

Product Name	MIP-1 α rabbit pAb
Host species	Rabbit
Applications	IHC;IF;ELISA
Species Cross-Reactivity	Human;Rat;Mouse;
Recommended dilutions	Immunohistochemistry: 1/100 - 1/300. ELISA: 1/20000. Not yet tested in other applications.
Immunogen	The antiserum was produced against synthesized peptide derived from human MIP-1 α . AA range:26-75
Specificity	MIP-1 α Polyclonal Antibody detects endogenous levels of MIP-1 α protein.
Formulation	Liquid in PBS containing 50% glycerol, 0.5% BSA and 0.02% sodium azide..
Storage	Store at -20°C. Avoid repeated freeze-thaw cycles.
Protein Name	C-C motif chemokine 3
Gene Name	CCL3
Cellular localization	Secreted.
Purification	The antibody was affinity-purified from rabbit antiserum by affinity-chromatography using epitope-specific immunogen.
Clonality	Polyclonal

Concentration	1 mg/ml
Observed band	
Human Gene ID	6348
Human Swiss-Prot Number	P10147
Alternative Names	CCL3; G0S19-1; MIP1A; SCYA3; C-C motif chemokine 3; G0/G1 switch regulatory protein 19-1; Macrophage inflammatory protein 1-alpha; MIP-1-alpha; PAT 464.1; SIS-beta; Small-inducible cytokine A3; Tonsillar lymphocyte LD78 alpha protein
Background	This locus represents a small inducible cytokine. The encoded protein, also known as macrophage inflammatory protein 1 alpha, plays a role in inflammatory responses through binding to the receptors CCR1, CCR4 and CCR5. Polymorphisms at this locus may be associated with both resistance and susceptibility to infection by human immunodeficiency virus type 1.[provided by RefSeq, Sep 2010],



Immunohistochemistry analysis of MIP-1 α antibody in paraffin-embedded human lung carcinoma tissue.