

RyR-2 (phospho Ser2808) rabbit pAb**Cat#: orb769986 (Manual)**

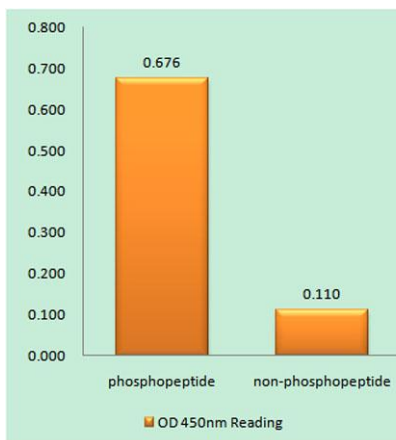
For research use only. Not intended for diagnostic use.

Product Name	RyR-2 (phospho Ser2808) rabbit pAb
Host species	Rabbit
Applications	IHC;IF;ELISA
Species Cross-Reactivity	Human;Mouse;Rat
Recommended dilutions	Immunohistochemistry: 1/100 - 1/300. ELISA: 1/10000. Not yet tested in other applications.
Immunogen	The antiserum was produced against synthesized peptide derived from human RyR2 around the phosphorylation site of Ser2808. AA range:2774-2823
Specificity	Phospho-RyR-2 (S2808) Polyclonal Antibody detects endogenous levels of RyR-2 protein only when phosphorylated at S2808.
Formulation	Liquid in PBS containing 50% glycerol, 0.5% BSA and 0.02% sodium azide..
Storage	Store at -20°C. Avoid repeated freeze-thaw cycles.
Protein Name	Ryanodine receptor 2
Gene Name	RYR2
Cellular localization	Sarcoplasmic reticulum membrane ; Multi-pass membrane protein . Membrane ; Multi-pass membrane protein . Sarcoplasmic reticulum . The number of predicted transmembrane domains varies between orthologs, but both N-terminus and C-terminus seem to be cytopla
Purification	The antibody was affinity-purified from rabbit antiserum by affinity-chromatography using epitope-specific immunogen.

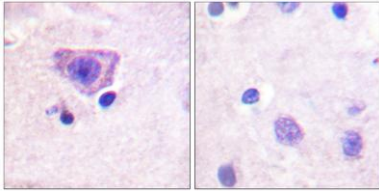
Clonality	Polyclonal
Concentration	1 mg/ml
Observed band	
Human Gene ID	6262
Human Swiss-Prot Number	Q92736
Alternative Names	RYR2; Ryanodine receptor 2; RYR-2; RyR2; hRYR-2; Cardiac muscle ryanodine receptor; Cardiac muscle ryanodine receptor-calcium release channel; Type 2 ryanodine receptor

Background

This gene encodes a ryanodine receptor found in cardiac muscle sarcoplasmic reticulum. The encoded protein is one of the components of a calcium channel, composed of a tetramer of the ryanodine receptor proteins and a tetramer of FK506 binding protein 1B proteins, that supplies calcium to cardiac muscle. Mutations in this gene are associated with stress-induced polymorphic ventricular tachycardia and arrhythmogenic right ventricular dysplasia. [provided by RefSeq, Jul 2008],



Enzyme-Linked Immunosorbent Assay (Phospho-ELISA) for Immunogen Phosphopeptide (Phospho-left) and Non-Phosphopeptide (Phospho-right), using RyR2 (Phospho-Ser2808) Antibody



Immunohistochemistry analysis of paraffin-embedded human brain, using RyR2 (Phospho-Ser2808) Antibody. The picture on the right is blocked with the phospho peptide.