

Ribosomal Protein S23 rabbit pAb**Cat#: orb769980 (Manual)**

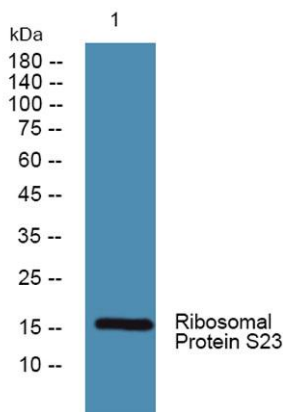
For research use only. Not intended for diagnostic use.

Product Name	Ribosomal Protein S23 rabbit pAb
Host species	Rabbit
Applications	WB;ELISA;IHC
Species Cross-Reactivity	Human;Mouse;Rat
Recommended dilutions	WB 1:500-2000;IHC-p 1:50-300; ELISA 2000-20000
Immunogen	The antiserum was produced against synthesized peptide derived from human RPS23. AA range:1-50
Specificity	Ribosomal Protein S23 Polyclonal Antibody detects endogenous levels of Ribosomal Protein S23 protein.
Formulation	Liquid in PBS containing 50% glycerol, 0.5% BSA and 0.02% sodium azide..
Storage	Store at -20°C. Avoid repeated freeze-thaw cycles.
Protein Name	40S ribosomal protein S23
Gene Name	RPS23
Cellular localization	Cytoplasm, cytosol . Cytoplasm . Rough endoplasmic reticulum . Detected on cytosolic polysomes (PubMed:25957688). Detected in ribosomes that are associated with the rough endoplasmic reticulum (By similarity). .
Purification	The antibody was affinity-purified from rabbit antiserum by affinity-chromatography using epitope-specific immunogen.

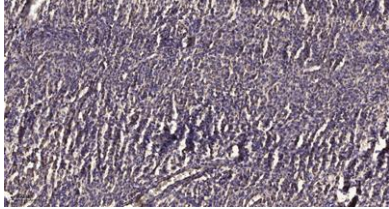
Clonality	Polyclonal
Concentration	1 mg/ml
Observed band	16kD
Human Gene ID	6228
Human Swiss-Prot Number	P62266
Alternative Names	RPS23; 40S ribosomal protein S23

Background

Ribosomes, the organelles that catalyze protein synthesis, consist of a small 40S subunit and a large 60S subunit. Together these subunits are composed of 4 RNA species and approximately 80 structurally distinct proteins. This gene encodes a ribosomal protein that is a component of the 40S subunit. The protein belongs to the S12P family of ribosomal proteins. It is located in the cytoplasm. The protein shares significant amino acid similarity with *S. cerevisiae* ribosomal protein S28. As is typical for genes encoding ribosomal proteins, there are multiple processed pseudogenes of this gene dispersed through the genome. [provided by RefSeq, Jul 2008],



Western blot analysis of lysates from HCT116 cells, primary antibody was diluted at 1:1000, 4° over night



Immunohistochemical analysis of paraffin-embedded human meningioma. 1, Antibody was diluted at 1:200(4° overnight). 2, Tris-EDTA,pH9.0 was used for antigen retrieval. 3,Secondary antibody was diluted at 1:200(room temperature, 45min).