

**Rsk-1 (phospho Ser380) rabbit pAb****Cat#: orb769955 (Manual)**

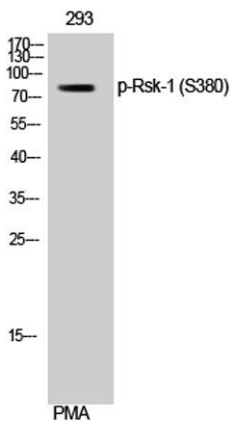
For research use only. Not intended for diagnostic use.

<b>Product Name</b>	Rsk-1 (phospho Ser380) rabbit pAb
<b>Host species</b>	Rabbit
<b>Applications</b>	WB;IHC;IF;ELISA
<b>Species Cross-Reactivity</b>	Human;Mouse;Rat
<b>Recommended dilutions</b>	Western Blot: 1/500 - 1/2000. Immunohistochemistry: 1/100 - 1/300. ELISA: 1/10000. Not yet tested in other applications.
<b>Immunogen</b>	The antiserum was produced against synthesized peptide derived from human p90 RSK around the phosphorylation site of Ser380. AA range:346-395
<b>Specificity</b>	Phospho-Rsk-1 (S380) Polyclonal Antibody detects endogenous levels of Rsk-1 protein only when phosphorylated at S380.
<b>Formulation</b>	Liquid in PBS containing 50% glycerol, 0.5% BSA and 0.02% sodium azide..
<b>Storage</b>	Store at -20°C. Avoid repeated freeze-thaw cycles.
<b>Protein Name</b>	Ribosomal protein S6 kinase alpha-1
<b>Gene Name</b>	RPS6KA1
<b>Cellular localization</b>	Nucleus. Cytoplasm.
<b>Purification</b>	The antibody was affinity-purified from rabbit antiserum by affinity-chromatography using epitope-specific immunogen.
<b>Clonality</b>	Polyclonal

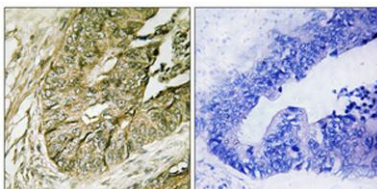
<b>Concentration</b>	1 mg/ml
<b>Observed band</b>	83kD
<b>Human Gene ID</b>	6195
<b>Human Swiss-Prot Number</b>	Q15418
<b>Alternative Names</b>	RPS6KA1; MAPKAPK1A; RSK1; Ribosomal protein S6 kinase alpha-1; S6K-alpha-1; 90 kDa ribosomal protein S6 kinase 1; p90-RSK 1; p90RSK1; p90S6K; MAP kinase-activated protein kinase 1a; MAPK-activated protein kinase 1a; MAPKAP kinase 1a; MAPKAP

**Background**

ribosomal protein S6 kinase A1(RPS6KA1) Homo sapiens This gene encodes a member of the RSK (ribosomal S6 kinase) family of serine/threonine kinases. This kinase contains 2 nonidentical kinase catalytic domains and phosphorylates various substrates, including members of the mitogen-activated kinase (MAPK) signalling pathway. The activity of this protein has been implicated in controlling cell growth and differentiation. Alternate transcriptional splice variants, encoding different isoforms, have been characterized. [provided by RefSeq, Jul 2008],

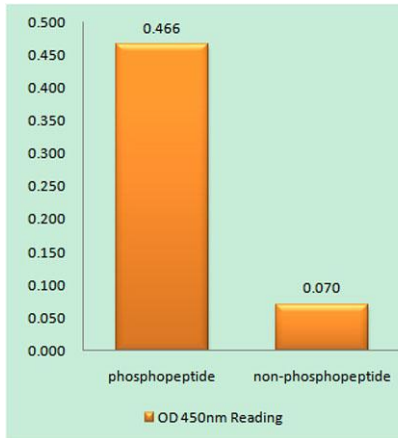


**Western Blot analysis of 293 cells using Phospho-Rsk-1 (S380) Polyclonal Antibody**

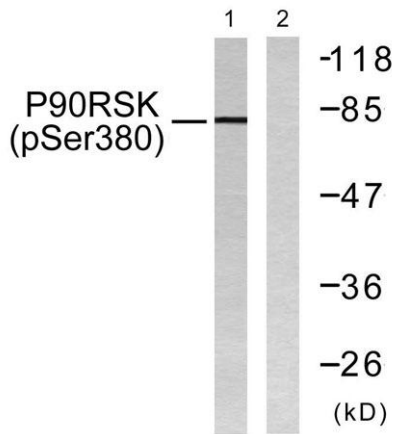


**Immunohistochemical analysis of paraffin-embedded Human colon cancer. Antibody was diluted at 1:100(4° overnight). High-pressure and temperature Tris-EDTA,pH8.0 was used for antigen retrieval. Negative contrl (right) obtained from antibody was pre-absorbed by immunogen peptide.**

Explore. Bioreagents.



**Enzyme-Linked Immunosorbent Assay (Phospho-ELISA) for Immunogen Phosphopeptide (Phospho-left) and Non-Phosphopeptide (Phospho-right), using p90 RSK (Phospho-Ser380) Antibody**



**Western blot analysis of lysates from 293 cells treated with PMA 125ng/ml 30', using p90 RSK (Phospho-Ser380) Antibody. The lane on the right is blocked with the phospho peptide.**