

**QM rabbit pAb****Cat#: orb769941 (Manual)**

For research use only. Not intended for diagnostic use.

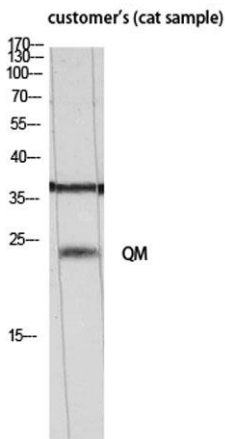
<b>Product Name</b>	QM rabbit pAb
<b>Host species</b>	Rabbit
<b>Applications</b>	WB;IHC
<b>Species Cross-Reactivity</b>	Human;Mouse;Rat;Cat
<b>Recommended dilutions</b>	WB 1:500-2000;IHC-p 1:50-300
<b>Immunogen</b>	The antiserum was produced against synthesized peptide derived from human 60S Ribosomal Protein L10. AA range:1-50
<b>Specificity</b>	QM Polyclonal Antibody detects endogenous levels of QM protein.
<b>Formulation</b>	Liquid in PBS containing 50% glycerol, 0.5% BSA and 0.02% sodium azide..
<b>Storage</b>	Store at -20°C. Avoid repeated freeze-thaw cycles.
<b>Protein Name</b>	60S ribosomal protein L10
<b>Gene Name</b>	RPL10
<b>Cellular localization</b>	endoplasmic reticulum,cytosol,ribosome,membrane,cytosolic large ribosomal subunit,
<b>Purification</b>	The antibody was affinity-purified from rabbit antiserum by affinity-chromatography using epitope-specific immunogen.
<b>Clonality</b>	Polyclonal

Explore. Bioreagents.

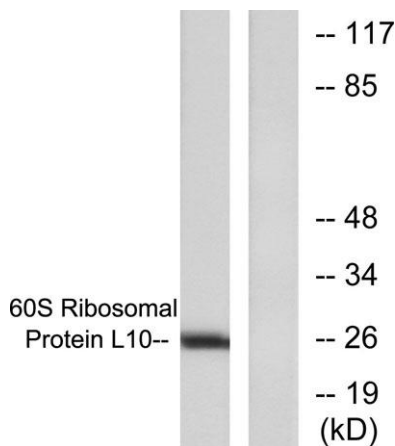
<b>Concentration</b>	1 mg/ml
<b>Observed band</b>	25kD
<b>Human Gene ID</b>	6134
<b>Human Swiss-Prot Number</b>	P27635
<b>Alternative Names</b>	RPL10; DXS648E; QM; 60S ribosomal protein L10; Laminin receptor homolog; Protein QM; Tumor suppressor QM

**Background**

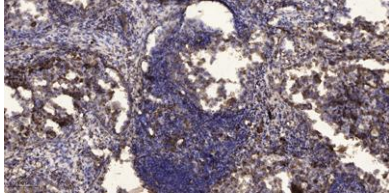
This gene encodes a ribosomal protein that is a component of the 60S ribosome subunit. The related protein in chicken can bind to c-Jun and can repress c-Jun-mediated transcriptional activation. Some studies have detected an association between variation in this gene and autism spectrum disorders, though others do not detect this relationship. There are multiple pseudogenes of this gene dispersed throughout the genome. Alternative splicing results in multiple transcript variants. [provided by RefSeq, Jan 2015],



**Western Blot analysis of customer's (cat sample) using QM Polyclonal Antibody diluted at 1:500**



**Western blot analysis of lysates from K562 cells, treated with Insulin 0.01u/ml 15min, using 60S Ribosomal Protein L10 Antibody. The lane on the right is blocked with the synthesized peptide.**



**Immunohistochemical analysis of paraffin-embedded human Squamous cell carcinoma of lung. 1, Antibody was diluted at 1:200(4° overnight). 2, Tris-EDTA,pH9.0 was used for antigen retrieval. 3,Secondary antibody was diluted at 1:200(room temperature, 45min).**