

Ret (phospho Tyr1062) rabbit pAb**Cat#: orb769907 (Manual)**

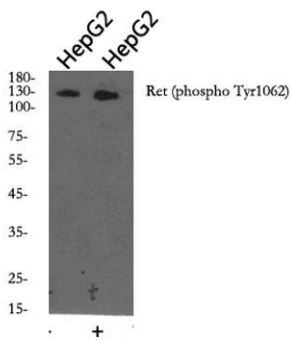
For research use only. Not intended for diagnostic use.

Product Name	Ret (phospho Tyr1062) rabbit pAb
Host species	Rabbit
Applications	WB;IHC;IF;ELISA
Species Cross-Reactivity	Human;Mouse;Rat
Recommended dilutions	Western Blot: 1/500 - 1/2000. Immunohistochemistry: 1/100 - 1/300. ELISA: 1/10000. Not yet tested in other applications.
Immunogen	The antiserum was produced against synthesized peptide derived from human Ret around the phosphorylation site of Tyr1062. AA range:1041-1090
Specificity	Phospho-Ret (Y1062) Polyclonal Antibody detects endogenous levels of Ret protein only when phosphorylated at Y1062.
Formulation	Liquid in PBS containing 50% glycerol, 0.5% BSA and 0.02% sodium azide..
Storage	Store at -20°C. Avoid repeated freeze-thaw cycles.
Protein Name	Proto-oncogene tyrosine-protein kinase receptor Ret
Gene Name	RET
Cellular localization	Cell membrane ; Single-pass type I membrane protein . Endosome membrane ; Single-pass type I membrane protein . Predominantly located on the plasma membrane. In the presence of SORL1 and GFRA1, directed to endosomes. .
Purification	The antibody was affinity-purified from rabbit antiserum by affinity-chromatography using epitope-specific immunogen.

Clonality	Polyclonal
Concentration	1 mg/ml
Observed band	170kD
Human Gene ID	5979
Human Swiss-Prot Number	P07949
Alternative Names	RET; CDHF12; CDHR16; PTC; RET51; Proto-oncogene tyrosine-protein kinase receptor Ret; Cadherin family member 12; Proto-oncogene c-Ret

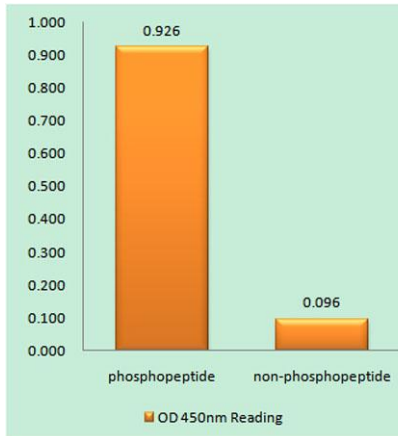
Background

ret proto-oncogene(RET) Homo sapiens This gene, a member of the cadherin superfamily, encodes one of the receptor tyrosine kinases, which are cell-surface molecules that transduce signals for cell growth and differentiation. This gene plays a crucial role in neural crest development, and it can undergo oncogenic activation in vivo and in vitro by cytogenetic rearrangement. Mutations in this gene are associated with the disorders multiple endocrine neoplasia, type IIA, multiple endocrine neoplasia, type IIB, Hirschsprung disease, and medullary thyroid carcinoma. Two transcript variants encoding different isoforms have been found for this gene. Additional transcript variants have been described but their biological validity has not been confirmed. [provided by RefSeq, Jul 2008],

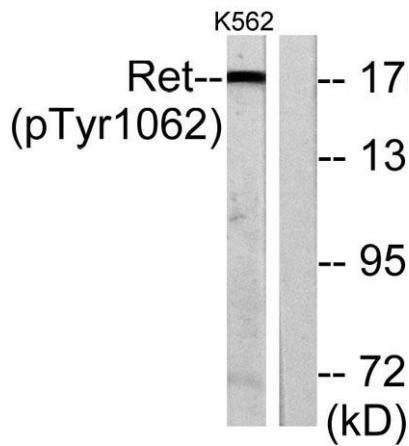


Western blot analysis of Ret (phospho Tyr1062) Polyclonal Antibody, using HepG2 cell treated or untreated with forskolin 40nM 30', 4° over night, secondary antibody(cat: RS0002 was diluted at 1:10000, 37° 1hour.

Explore. Bioreagents.



Enzyme-Linked Immunosorbent Assay (Phospho-ELISA) for Immunogen Phosphopeptide (Phospho-left) and Non-Phosphopeptide (Phospho-right), using Ret (Phospho-Tyr1062) Antibody



Western blot analysis of lysates from K562 cells, using Ret (Phospho-Tyr1062) Antibody. The lane on the right is blocked with the phospho peptide.