

RelB (phospho Ser552) rabbit pAb**Cat#: orb769902 (Manual)**

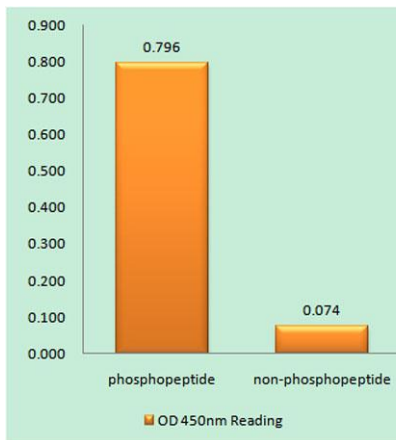
For research use only. Not intended for diagnostic use.

Product Name	RelB (phospho Ser552) rabbit pAb
Host species	Rabbit
Applications	WB;IHC;IF;ELISA
Species Cross-Reactivity	Human;Mouse
Recommended dilutions	Western Blot: 1/500 - 1/2000. Immunohistochemistry: 1/100 - 1/300. ELISA: 1/20000. Not yet tested in other applications.
Immunogen	The antiserum was produced against synthesized peptide derived from human RelB around the phosphorylation site of Ser552. AA range:530-579
Specificity	Phospho-RelB (S552) Polyclonal Antibody detects endogenous levels of RelB protein only when phosphorylated at S552.
Formulation	Liquid in PBS containing 50% glycerol, 0.5% BSA and 0.02% sodium azide..
Storage	Store at -20°C. Avoid repeated freeze-thaw cycles.
Protein Name	Transcription factor RelB
Gene Name	RELB
Cellular localization	Nucleus . Cytoplasm, cytoskeleton, microtubule organizing center, centrosome . Colocalizes with NEK6 in the centrosome.
Purification	The antibody was affinity-purified from rabbit antiserum by affinity-chromatography using epitope-specific immunogen.
Clonality	Polyclonal

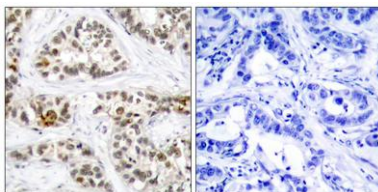
Concentration	1 mg/ml
Observed band	62kD
Human Gene ID	5971
Human Swiss-Prot Number	Q01201
Alternative Names	RELB; Transcription factor RelB; I-Rel

Background

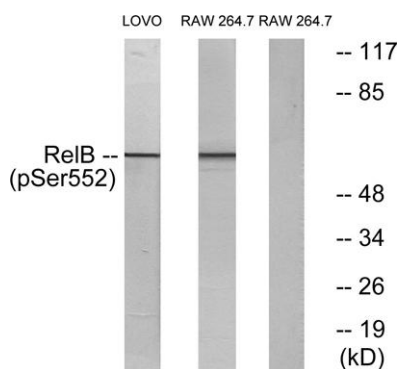
caution: Was originally (PubMed:1577270) thought to inhibit the transcriptional activity of nuclear factor NF-kappa-B. domain: Both N- and C-terminal domains are required for transcriptional activation. function: NF-kappa-B is a pleiotropic transcription factor which is present in almost all cell types and is involved in many biological processes such as inflammation, immunity, differentiation, cell growth, tumorigenesis and apoptosis. NF-kappa-B is a homo- or heterodimeric complex formed by the Rel-like domain-containing proteins RELA/p65, RELB, NFKB1/p105, NFKB1/p50, REL and NFKB2/p52. The dimers bind at kappa-B sites in the DNA of their target genes and the individual dimers have distinct preferences for different kappa-B sites that they can bind with distinguishable affinity and specificity. Different dimer combinations act as transcriptional activators or repressors, respectively. NF-kappa-B is controlled by various mechanisms of post-translational modification and subcellular compartmentalization as well as by interactions with other cofactors or corepressors. NF-kappa-B complexes are held in the cytoplasm in an inactive state complexed with members of the NF-kappa-B inhibitor (I-kappa-B) family. In a conventional activation pathway, I-kappa-B is phosphorylated by I-kappa-B kinases (IKKs) in response to different activators, subsequently degraded thus liberating the active NF-kappa-B complex which translocates to the nucleus. NF-kappa-B heterodimeric RelB-p50 and RelB-p52 complexes are transcriptional activators. RELB neither associates with DNA nor with RELA/p65 or REL. Stimulates promoter activity in the presence of NFKB2/p49. induction: By mitogens. PTM: Phosphorylation at 'Thr-103' and 'Ser-573' is followed by proteasomal degradation. similarity: Contains 1 RHD (Rel-like) domain. subunit: Component of the NF-kappa-B RelB-p50 complex. Component of the NF-kappa-B RelB-p52 complex. Self-associates; the interaction seems to be transient and may prevent degradation allowing for heterodimer formation with p50 or p52. Interacts with NFKB1/p50, NFKB2/p52 and NFKB2/p100. Interacts with NFKBID.



Enzyme-Linked Immunosorbent Assay (Phospho-ELISA) for Immunogen Phosphopeptide (Phospho-left) and Non-Phosphopeptide (Phospho-right), using RelB (Phospho-Ser552) Antibody



Immunohistochemistry analysis of paraffin-embedded human breast carcinoma, using RelB (Phospho-Ser552) Antibody. The picture on the right is blocked with the phospho peptide.



Western blot analysis of lysates from LOVO cells and RAW264.7 cells, using RelB (Phospho-Ser552) Antibody. The lane on the right is blocked with the phospho peptide.