

Rb (phospho Thr821) rabbit pAb**Cat#: orb769874 (Manual)**

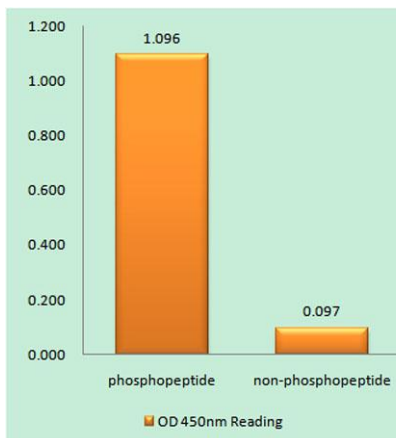
For research use only. Not intended for diagnostic use.

Product Name	Rb (phospho Thr821) rabbit pAb
Host species	Rabbit
Applications	IHC;IF;ELISA
Species Cross-Reactivity	Human;Mouse;Rat
Recommended dilutions	Immunohistochemistry: 1/100 - 1/300. Immunofluorescence: 1/200 - 1/1000. ELISA: 1/40000. Not yet tested in other applications.
Immunogen	The antiserum was produced against synthesized peptide derived from human Retinoblastoma around the phosphorylation site of Thr821. AA range:791-840
Specificity	Phospho-Rb (T821) Polyclonal Antibody detects endogenous levels of Rb protein only when phosphorylated at T821.
Formulation	Liquid in PBS containing 50% glycerol, 0.5% BSA and 0.02% sodium azide..
Storage	Store at -20°C. Avoid repeated freeze-thaw cycles.
Protein Name	Retinoblastoma-associated protein
Gene Name	RB1
Cellular localization	Nucleus . During keratinocyte differentiation, acetylation by KAT2B/PCAF is required for nuclear localization. .
Purification	The antibody was affinity-purified from rabbit antiserum by affinity-chromatography using epitope-specific immunogen.
Clonality	Polyclonal

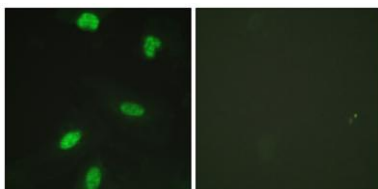
Concentration	1 mg/ml
Observed band	
Human Gene ID	5925
Human Swiss-Prot Number	P06400
Alternative Names	RB1; Retinoblastoma-associated protein; p105-Rb; pRb; Rb; pp110

Background

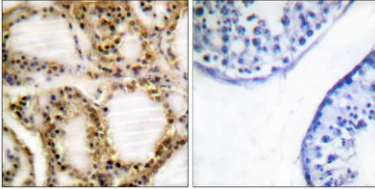
The protein encoded by this gene is a negative regulator of the cell cycle and was the first tumor suppressor gene found. The encoded protein also stabilizes constitutive heterochromatin to maintain the overall chromatin structure. The active, hypophosphorylated form of the protein binds transcription factor E2F1. Defects in this gene are a cause of childhood cancer retinoblastoma (RB), bladder cancer, and osteogenic sarcoma. [provided by RefSeq, Jul 2008],



Enzyme-Linked Immunosorbent Assay (Phospho-ELISA) for Immunogen Phosphopeptide (Phospho-left) and Non-Phosphopeptide (Phospho-right), using Retinoblastoma (Phospho-Thr821) Antibody



Immunofluorescence analysis of HeLa cells, using Retinoblastoma (Phospho-Thr821) Antibody. The picture on the right is blocked with the phospho peptide.



Immunohistochemistry analysis of paraffin-embedded human testis, using Retinoblastoma (Phospho-Thr821) Antibody. The picture on the right is blocked with the phospho peptide.