

Rap 2B rabbit pAb**Cat#: orb769865 (Manual)**

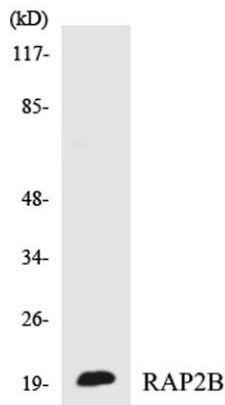
For research use only. Not intended for diagnostic use.

Product Name	Rap 2B rabbit pAb
Host species	Rabbit
Applications	WB;IHC
Species Cross-Reactivity	Human;Mouse;Rat
Recommended dilutions	WB 1:500-2000;IHC-p 1:50-300
Immunogen	The antiserum was produced against synthesized peptide derived from human RAP2B. AA range:98-147
Specificity	Rap 2B Polyclonal Antibody detects endogenous levels of Rap 2B protein.
Formulation	Liquid in PBS containing 50% glycerol, 0.5% BSA and 0.02% sodium azide..
Storage	Store at -20°C. Avoid repeated freeze-thaw cycles.
Protein Name	Ras-related protein Rap-2b
Gene Name	RAP2B
Cellular localization	Recycling endosome membrane ; Lipid-anchor ; Cytoplasmic side . Associated with red blood cells-released vesicles.
Purification	The antibody was affinity-purified from rabbit antiserum by affinity-chromatography using epitope-specific immunogen.
Clonality	Polyclonal

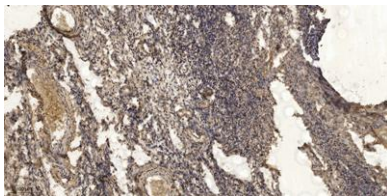
Concentration	1 mg/ml
Observed band	18kD
Human Gene ID	5912
Human Swiss-Prot Number	P61225
Alternative Names	RAP2B; Ras-related protein Rap-2b

Background

This intronless gene belongs to a family of RAS-related genes. The proteins encoded by these genes share approximately 50% amino acid identity with the classical RAS proteins and have numerous structural features in common. The most striking difference between the RAP and RAS proteins resides in their 61st amino acid: glutamine in RAS is replaced by threonine in RAP proteins. Evidence suggests that this protein may be polyisoprenylated and palmitoylated. [provided by RefSeq, Jul 2008],



Western blot analysis of the lysates from COLO205 cells using RAP2B antibody.



Immunohistochemical analysis of paraffin-embedded human oophoroma. 1, Antibody was diluted at 1:200(4° overnight). 2, Tris-EDTA,pH9.0 was used for antigen retrieval. 3,Secondary antibody was diluted at 1:200(room temperature, 45min).



Explore. Bioreagents.

www.biorbyt.com