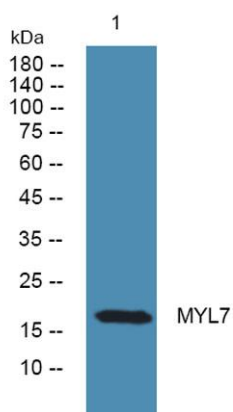


**MYL7 rabbit pAb****Cat#: orb769836 (Manual)**

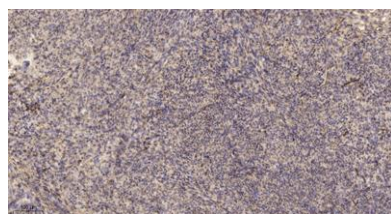
For research use only. Not intended for diagnostic use.

<b>Product Name</b>	MYL7 rabbit pAb
<b>Host species</b>	Rabbit
<b>Applications</b>	WB;IHC
<b>Species Cross-Reactivity</b>	Human;Mouse;Rat;Monkey
<b>Recommended dilutions</b>	WB 1:500-2000;IHC-p 1:50-300
<b>Immunogen</b>	The antiserum was produced against synthesized peptide derived from human MYL7. AA range:111-160
<b>Specificity</b>	MYL7 Polyclonal Antibody detects endogenous levels of MYL7 protein.
<b>Formulation</b>	Liquid in PBS containing 50% glycerol, 0.5% BSA and 0.02% sodium azide..
<b>Storage</b>	Store at -20°C. Avoid repeated freeze-thaw cycles.
<b>Protein Name</b>	Myosin regulatory light chain 2 atrial isoform
<b>Gene Name</b>	MYL7
<b>Cellular localization</b>	cytosol,myosin complex,A band,dendritic spine,
<b>Purification</b>	The antibody was affinity-purified from rabbit antiserum by affinity-chromatography using epitope-specific immunogen.
<b>Clonality</b>	Polyclonal

<b>Concentration</b>	1 mg/ml
<b>Observed band</b>	18kD
<b>Human Gene ID</b>	58498
<b>Human Swiss-Prot Number</b>	Q01449
<b>Alternative Names</b>	MYL7; MYL2A; MYLC2A; Myosin regulatory light chain 2; atrial isoform; MLC-2a; MLC2a; Myosin light chain 2a; Myosin regulatory light chain 7
<b>Background</b>	miscellaneous:This chain binds calcium.,similarity:Contains 3 EF-hand domains.,subunit:Myosin is an hexamer of 2 heavy chains and 4 light chains.,tissue specificity:Predominantly expressed in adult atrial muscle.,



**Western blot analysis of lysates from SH-SY5Y cells, primary antibody was diluted at 1:1000, 4° over night**



**Immunohistochemical analysis of paraffin-embedded human uterus. 1, Antibody was diluted at 1:200(4° overnight). 2, Tris-EDTA,pH9.0 was used for antigen retrieval. 3,Secondary antibody was diluted at 1:200(room temperature, 45min).**