

PTPα (phospho Tyr798) rabbit pAb**Cat#: orb769813 (Manual)**

For research use only. Not intended for diagnostic use.

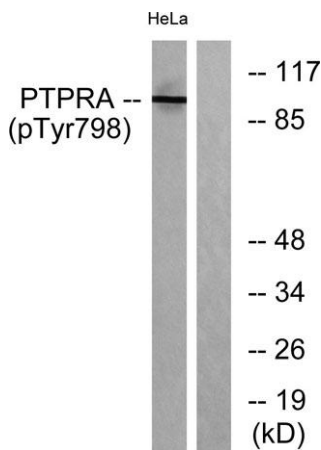
Product Name	PTPα (phospho Tyr798) rabbit pAb
Host species	Rabbit
Applications	WB;ELISA;IHC
Species Cross-Reactivity	Human;Mouse;Rat;Monkey
Recommended dilutions	WB 1:500-2000;IHC-p 1:50-300; ELISA 2000-20000
Immunogen	The antiserum was produced against synthesized peptide derived from human PTPRA around the phosphorylation site of Tyr798. AA range:753-802
Specificity	Phospho-PTPα (Y798) Polyclonal Antibody detects endogenous levels of PTPα protein only when phosphorylated at Y798.
Formulation	Liquid in PBS containing 50% glycerol, 0.5% BSA and 0.02% sodium azide..
Storage	Store at -20°C. Avoid repeated freeze-thaw cycles.
Protein Name	Receptor-type tyrosine-protein phosphatase alpha
Gene Name	PTPRA
Cellular localization	Cell membrane ; Single-pass type I membrane protein . Cell junction, focal adhesion . Localizes to focal adhesion sites following integrin engagement. .
Purification	The antibody was affinity-purified from rabbit antiserum by affinity-chromatography using epitope-specific immunogen.
Clonality	Polyclonal

Explore. Bioreagents.

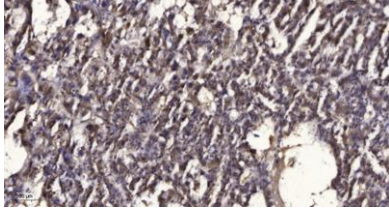
Concentration	1 mg/ml
Observed band	100 90kD
Human Gene ID	5786
Human Swiss-Prot Number	P18433
Alternative Names	PTPRA; PTPA; PTPRL2; Receptor-type tyrosine-protein phosphatase alpha; Protein-tyrosine phosphatase alpha; R-PTP-alpha

Background

The protein encoded by this gene is a member of the protein tyrosine phosphatase (PTP) family. PTPs are known to be signaling molecules that regulate a variety of cellular processes including cell growth, differentiation, mitotic cycle, and oncogenic transformation. This PTP contains an extracellular domain, a single transmembrane segment and two tandem intracytoplasmic catalytic domains, and thus represents a receptor-type PTP. This PTP has been shown to dephosphorylate and activate Src family tyrosine kinases, and is implicated in the regulation of integrin signaling, cell adhesion and proliferation. Three alternatively spliced variants of this gene, which encode two distinct isoforms, have been reported. [provided by RefSeq, Jul 2008],



Western blot analysis of lysates from HeLa cells treated with serum 20% 15', using PTPRA (Phospho-Tyr798) Antibody. The lane on the right is blocked with the phospho peptide.



Immunohistochemical analysis of paraffin-embedded human liver cancer. 1, Antibody was diluted at 1:200(4° overnight). 2, Tris-EDTA,pH9.0 was used for antigen retrieval. 3,Secondary antibody was diluted at 1:200(room temperature, 45min).