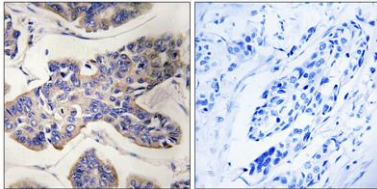


PSK2 rabbit pAb**Cat#: orb769794 (Manual)**

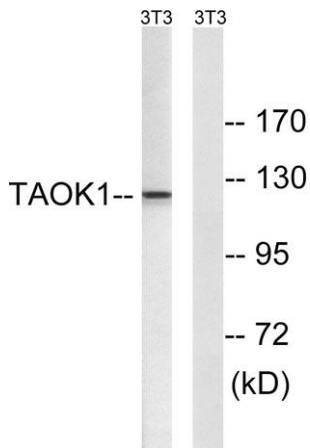
For research use only. Not intended for diagnostic use.

Product Name	PSK2 rabbit pAb
Host species	Rabbit
Applications	WB;IHC;IF;ELISA
Species Cross-Reactivity	Human;Mouse;Rat
Recommended dilutions	Western Blot: 1/500 - 1/2000. Immunohistochemistry: 1/100 - 1/300. ELISA: 1/5000. Not yet tested in other applications.
Immunogen	The antiserum was produced against synthesized peptide derived from human TAOK1. AA range:431-480
Specificity	PSK2 Polyclonal Antibody detects endogenous levels of PSK2 protein.
Formulation	Liquid in PBS containing 50% glycerol, 0.5% BSA and 0.02% sodium azide..
Storage	Store at -20°C. Avoid repeated freeze-thaw cycles.
Protein Name	Serine/threonine-protein kinase TAO1
Gene Name	TAOK1
Cellular localization	Cytoplasm .
Purification	The antibody was affinity-purified from rabbit antiserum by affinity-chromatography using epitope-specific immunogen.
Clonality	Polyclonal

Concentration	1 mg/ml
Observed band	120kD
Human Gene ID	57551
Human Swiss-Prot Number	Q7L7X3
Alternative Names	TAOK1; KIAA1361; MAP3K16; MARKK; Serine/threonine-protein kinase TAO1; Kinase from chicken homolog B; hKFC-B; MARK Kinase; MARKK; Prostate-derived sterile 20-like kinase 2; PSK-2; PSK2; Prostate-derived STE20-like kinase 2; Thousand and one
Background	<p>catalytic activity:ATP + a protein = ADP + a phosphoprotein.,function:Phosphorylates MKK3 (By similarity). Activates the p38 MAP kinase pathway through the specific activation of the upstream MKK3 kinase.,PTM:Autophosphorylated.,similarity:Belongs to the protein kinase superfamily. STE Ser/Thr protein kinase family. STE20 subfamily.,similarity:Contains 1 protein kinase domain.,subunit:Self-associates. Interacts with MKK3.,tissue specificity:Highly expressed in the testis, and to a lower extent also expressed in brain, placenta, colon and skeletal muscle.,</p>



Immunohistochemistry analysis of paraffin-embedded human breast carcinoma tissue, using TAOK1 Antibody. The picture on the right is blocked with the synthesized peptide.



Western blot analysis of lysates from NIH/3T3 cells, using TAOK1 Antibody. The lane on the right is blocked with the synthesized peptide.