

CdGAP rabbit pAb**Cat#: orb769789 (Manual)**

For research use only. Not intended for diagnostic use.

Product Name	CdGAP rabbit pAb
Host species	Rabbit
Applications	IHC;IF;ELISA
Species Cross-Reactivity	Human;Mouse;Rat
Recommended dilutions	Immunohistochemistry: 1/100 - 1/300. ELISA: 1/5000. Not yet tested in other applications.
Immunogen	Synthesized peptide derived from CdGAP . at AA range: 730-810
Specificity	CdGAP Polyclonal Antibody detects endogenous levels of CdGAP protein.
Formulation	Liquid in PBS containing 50% glycerol, 0.5% BSA and 0.02% sodium azide..
Storage	Store at -20°C. Avoid repeated freeze-thaw cycles.
Protein Name	Rho GTPase-activating protein 31
Gene Name	ARHGAP31
Cellular localization	cytosol,focal adhesion,lamellipodium,
Purification	The antibody was affinity-purified from rabbit antiserum by affinity-chromatography using epitope-specific immunogen.
Clonality	Polyclonal

Concentration 1 mg/ml

Observed band

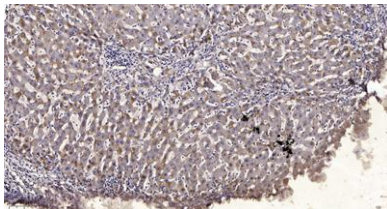
Human Gene ID 57514

Human Swiss-Prot Number Q9ULL6

Alternative Names ARHGAP31; CDGAP; KIAA1204; Rho GTPase-activating protein 31; Cdc42 GTPase-activating protein

Background

This gene encodes a GTPase-activating protein (GAP). A variety of cellular processes are regulated by Rho GTPases which cycle between an inactive form bound to GDP and an active form bound to GTP. This cycling between inactive and active forms is regulated by guanine nucleotide exchange factors and GAPs. The encoded protein is a GAP shown to regulate two GTPases involved in protein trafficking and cell growth. [provided by RefSeq, Jul 2008],



Immunohistochemical analysis of paraffin-embedded human liver cancer. 1, Antibody was diluted at 1:200(4° overnight). 2, Tris-EDTA,pH9.0 was used for antigen retrieval. 3,Secondary antibody was diluted at 1:200(room temperature, 45min).